

Mogck Angus Farms



37th Annual Production Sale

THURSDAY • MARCH 13, 2025 • 1 P.M. (CDT)

At the Farm - Located 1/2 mile North of Tripp

SELLING 77 Registered Yearling Angus Bulls
5 Elite Registered Yearling Angus Heifers
40 Purebred Yearling Angus Heifers (sell as commercial)



Mogck Angus Farms

Welcome



Dear Friends,

The Mogck family cordially invites you to join us March 13th at the farm, North of Tripp for our 37th Annual Production Sale. It's humbling & rewarding each time you put your faith in our program and we look forward to visiting with you about the cattle & seeing everyone sale day!

First, we are very excited to be offering something new this year. In addition to selling 77 performance tested registered yearling Angus bulls along with 40 head of home raised purebred yearling Angus heifers (sell as commercial), we are selling 5 elite registered yearling Angus heifers – all of which we think have donor potential. These 5 heifers represent the very best of what we can produce in a female & we are confident that each one is the kind that an Angus herd can be built off of & around. We would like to retain 1 flush to each female at our expense & your convenience.

Last year's sale featured the first sons of Connealy Hallmark, a bull we're quite proud of & whose sons were very well received. His combination of phenotype, calving ease, growth & superior carcass traits is remarkable & his EPD's over the past year have only improved. Our first Hallmark daughters are entering production, they are good milkers, have excellent feet and we are very impressed with what we've seen thus far. We will be selling what we think are the best 2 Hallmark daughters that we've raised to date.

We'll have everything penned mid morning sale day so come early for a roll & coffee; we'll follow that with a beef lunch starting at 11 with the sale starting at 1pm. Call or text with questions anytime – we'd love to visit with you about the bulls & heifers. Many thanks for your consideration!

Sincerely,
Damon Mogck



**Damon, Nadine &
Campbell Mogck**
(612) 618-8577

**David & Candyce
Mogck**
(605) 940-9771

Brian & Dee Mogck
(605) 770-4426

Justin Mogck & Steph
(605) 929-4021

Norma Mogck

David's email address • davidmogck@santel.net / Address: 1100 N. Main, Tripp, SD 57376

www.mogckangusfarms.com



37th Annual Production Sale

THURSDAY • 1 P.M. (CDT)

MARCH 13, 2025

At the Farm - Located 1/2 mile North of Tripp

SALE DAY SCHEDULE CDT

10:00 A.M. Bulls will be grouped in large pens ready to evaluate

11:30 A.M. Angus beef meal served in our heated sale facility

1 P.M. Sale

SALE DAY PHONES:

David Mogck (605) 940-9771

Justin Mogck (605) 929-4021

Damon Mogck (612) 618-8577

Brian Mogck (605) 770-4426

AUCTIONEER

Seth Weishaar, Belle Fourche, SD (605) 210-1124

SALE REPRESENTATIVES

Andrew Swanson, American Angus Association (507) 829-4133

Dustin Carter, Livestock Plus (712) 898-9972

Colt Keffer, CK Sales & Marketing (765) 376-8784

Joseph Kvigne, Special Assignment (605) 670-1785

Chris Effling, Sales Consultant (605) 769-0142

Justin Dikoff, DV Auction (605) 290-0635

Cory Thomsen, Special Assignment (605) 730-2397

NUTRITION

Bull Development – Elite Feeds & Nutrition (605) 589-3003

SELLING - 77 Registered Yearling Angus Bulls, 5 Registered Yearling Angus Heifers and 40 Purebred Yearling Angus Heifers (will sell as commercial in groups of 5 or more head)

SALE LOCATION 1100 North Main Tripp, SD 57376.

From the intersection of Hwys. 37 & 18, we're 1-1/4 miles east on Hwy. 18.

And our farm is 1/4 mile south as you come into Tripp. We're located 35 miles south of Mitchell, SD and 45 minutes north of Niobrara, NE. Many hotels/motels available within 35 miles; please give us a call for recommendations.

VOLUME DISCOUNT 2% on 2-4 bulls, 5% on 5 or more bulls

HERD HEALTH Bulls will be semen tested prior to the sale & tested negative for BVD by Dr. Erik Holum of Sweetgrass Vet Service. We also execute a comprehensive calfhood vaccination program throughout the season with the assistance of Dr. Greg VerHeul (Viborg) & the Sioux Nation team of Scotland. Heifers were bangs vaccinated and kept under the watchful eye of Dr. Shawn Bietz & team of Neighborhood Vet in Tripp. Special thanks to Katie Koehn of Ralphs Feeds in Freeman for her advice & assistance throughout the year on cattle health & nutrition as well!

DELIVERY Free delivery within 300 miles or central points. \$100 discount if picked up within one week of the sale. We will help coordinate affordable trucking for all other long-distance deliveries.

BREEDER'S GUARANTEE Mogck Angus Farms guarantees all bulls selling for \$3,000 or more against breeding injury for the first breeding season. Breeding season is defined as the 90 day period following the first turnout of the bull(s). If a replacement is available, he will be provided, or if a buyer prefers, credit towards one bull will be given in the following year's sale, less salvage value of \$1,750. *Death of the bull is not covered and we recommend the purchase of livestock mortality insurance to cover this type of loss.

INSURANCE We recommend the purchase of bull mortality or loss of use insurance and a representative with Martin Trudeau Agency (605-770-5170) will be available sale day.

SEMEN INTEREST Mogck Angus will retain 1/3 revenue sharing semen interest on all bulls in the sale. Buyer will retain full possession & full salvage value.

STORM DATE To be announced on radio stations KMIT 105.9 FM and KOOL 98.3 FM along with our website.

TERMS & CONDITIONS Cattle will sell under the suggested Terms and Conditions of the American Angus Association (http://www.angus.org/Pub/suggested_sale_terms.pdf).

ANNOUNCEMENTS Announcements made from the auction block on sale day will take precedence over printed material or any form of advertisement.

LIABILITIES All persons who attend the sale do so at their own risk. The seller assumes no responsibility for any accident that may occur.

SALE DAY PHOTOGRAPHY Nicole Suurmeier - Scotland High School Photography Class



If you see this logo in conjunction with an individual animal or group of animals, you know that that animal is registered with the American Angus Association and backed by the power of data, programs and pedigrees of the Association. Not all Angus are REGISTERED Angus. Invest wisely in those that carry the Powered By Angus logo.

ANGUS MEDIA EPDs contained in the hard copy of this sale book were current as of print date. Digital versions of this sale book can be viewed online at www.angus.org and will have EPDs updated every Friday with the exception of EPD references in footnotes and photos. Any PDF downloads from the website will contain EPDs current as of the date downloaded. References: American Angus Association®, AHIR®, AngusLinkSM, CAB®, Pathfinder®.

• Maternal powerhouse! Her EPD profile is unrivaled - top 1% for Heifer Pregnancy, top 2% for \$Maternal & in the top 1% for \$Weaning. We think she's going to raise some high-performing, high-selling bull calves but will also produce a set of females that'll quickly become the backbone of your cowherd. Her Rainmaker 4404 donor dam is moderately made with a perfect udder and is injecting carcass & udder quality along with fertility into her daughters. Full sister to Lot 19 and maternal sister to Lot 12.



Memory 46 of Tripp - Lot C

Lot
C

Memory 46 of Tripp

Birth Date: 02-03-2024

Cow +*21127195

Tattoo: 46

MAE

SIRE: *CONNEALY CRAFTSMAN AAA 20132505

| #*Basin Rainmaker 4404

DAM: *MEMORY 945 OF TRIPP AAA 19581138

| Memory 676 of Tripp

CED	BW	WW	YR	RADG	SC
+6	+5	+92 3%	+148 10%	+27	+32
DOC	HP	CEM	MILK	\$EN	
+19	+20.8 1%	+11 20%	+37 3%	-32	
CW	MARB	RE	\$M	\$W	\$F
+70 20%	+73	+1.17 10%	+99 2%	+101 1%	+109 20%
					+170
					+319 15%

Lot
D

Impact Gal 473 of Tripp

Birth Date: 02-29-2024

Cow 21113957

Tattoo: 473

MAE

SIRE: +*CONNEALY HALLMARK AAA 20132139

| #+*M A R Double XL 320

DAM: IMPACT GAL 839 OF TRIPP AAA 19268430

| #Impact Gal 053 of Tripp

CED	BW	WW	YR	RADG	SC
+2	+2.6	+88 10%	+149 10%	+32 15%	+76
DOC	HP	CEM	MILK	\$EN	
+9	+16.5 15%	+2	+20	-45	
CW	MARB	RE	\$M	\$W	\$F
+69 20%	+83	+89	+48	+69	+114 15%
					+180 20%
					+281



• Another Hallmark daughter and another chance to hook into one of the elite females in our program. She's a high-performing, big-bodied, attractive female with additional power, length of body and added frame. Dam is a beautiful 7-year-old Double XL female and grandam is a Pathfinder sired by Final Answer. Everyone that has walked thru the heifer pen has quickly taken notice of this beauty.

Impact Gal 473 of Tripp - Lot D



Memory 481 of Tripp - Lot E

Lot
E

Memory 481 of Tripp

Birth Date: 03-05-2024

Cow 21113948

Tattoo: 481



SIRE: MAF NATIONAL 201 AAA 19876458



#+*TEX Playbook 5437

DAM: MOGCKS MEMORY 034 OF TRIPP AAA 20028110

Memory 847 of Tripp

CED	BW	WW	YR	RADG	SC
+2	+3.3	+87 10%	+144 15%	+1.25	+1.95
DOC	HP	CEM	MILK	\$EN	
+22	+13.6	+7	+25	-33	
CW	MARB	RE	\$M	\$W	\$F
+60	+1.66	+1.83	+65	+73 20%	+114 15%
					+170
					+285

- Extra stout, bone & substance with added muscle, here's the big-time performance heifer. If that's not enough, she combines all of that with an absolute killer look! From the heart of our Memory cow family as well as a former Angus sire of ours, Antidote, we're confident this one will raise big, stout bulls and donor-quality females. One look at this one and we think you'll love her as much as we do!

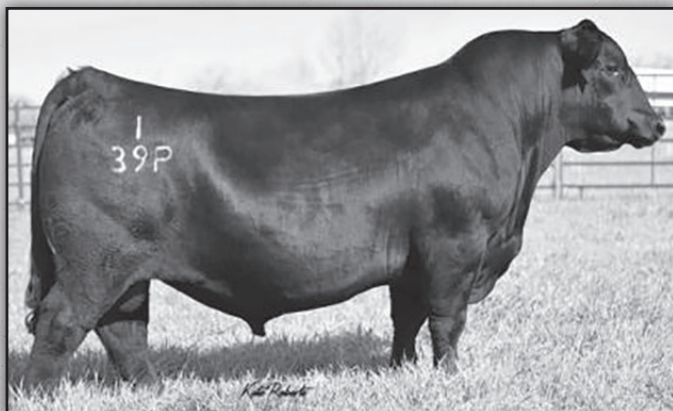


Confirmation 2024 – with her
godparents & sponsors – Aunt Deanna
& Uncle Justin



Campbell with her 2 Hallmark sired
heifers at the 2024 SD State Fair



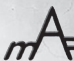


Connealy Pinnacle

Lot Ref A Connealy Pinnacle

Birth Date: 11-15-2021

Bull #20385876

Tattoo: 139P 

SIRE: #+K C F BENNETT SUMMATION AAA 19125179

*Connealy Stronghold

DAM: *PAMMY OF CONANGA 993V AAA 19855913

*Powie of Conanga 7955



ANGUSGS
Powered by NEOGEN

CED	BW	WW	YR	RADG	SC
+8	+2.1	+89 5%	+161 3%	+33 10%	+1.02
DOC	HP	CEM	MILK	\$EN	
+29 10%	+12.5	+9	+34 10%	-15	
CW	MARB	RE	FAT		
+79 4%	+81	+96 15%	+019		
\$M	\$W	\$F	\$G	\$B	\$C
+94 3%	+92 1%	+131 4%	+64 25%	+195 10%	+347 3%

- Pinnacle was the lead-off and high-selling bull at the Connealy 2023 Angus Sale.
- A phenotypic powerhouse who is wide, deep and thick with exceptional presence.
- He offers curve-bending traits with breed-leading \$Values across the board.
- His growth numbers match what we witnessed with our own progeny, big-time performance!



MAF Pinnacle 426 - Lot 1



Lot 1

Lot 1 MAF Pinnacle 426

Birth Date: 02-11-2024

Bull #21108852

Tattoo: 426 

SIRE: *CONNEALY PINNACLE AAA 20385876

ANGUSGS
Powered by NEOGEN

#+*Deer Valley Growth Fund

DAM: *MOGCKS MISS TILLY 218 AAA 20529966

*Mogcks Miss Tilly 016

CALVING EASE
★★★★

CED	BW	WW	YR	RADG	SC
+14 4%	+1.8	+109 1%	+187 1%	+36 3%	+68
DOC	HP	CEM	MILK	\$EN	
+19	+12.5	+13 10%	+29	-56	
CW	MARB	RE	BW	Adj. WW	WW Ratio
+98 1%	+25	+1.16 10%	83	967	136
\$M	\$W	\$F	\$B	\$C	
+60	+99 1%	+143 1%	+181 20%	+295 25%	

- A bull definitely worthy of leading off our 2025 sale catalog! In person, you appreciate how soft made & big middled he is while also carrying a tremendous amount of muscle. Lot 1 gets out and moves well on a set of excellent feet & legs and he has a fantastic temperament. His 1st calf Growth Fund dam raised him to a whopping 967 lbs & bred back quickly despite the extra workload. Who says you can't have elite calving ease with big time payweight - Lot 1 does just that!



High-selling Tilly son from prior sale.



- Here's another Pinnacle son with exceptional growth figures. Long bodied, extended up front, level topped, with additional frame. He's a well-balanced, well-behaved bull with tremendous upside. His dam is a 1st calf Revelation daughter that goes back to our #321 donor cow.



Lot 2

MAF Pinnacle 439 - Lot 2

Lot 2 MAF Pinnacle 439

Birth Date: 02-13-2024

Bull #21108913

Tattoo: 439

SIRE: *CONNEALY PINNACLE AAA 20385876

+*V A R Revelation 6299

DAM: IMPACT GAL 260 OF TRIPP AAA 20448750

Impact Gal 321 of Tripp



ANGUSGS
Powered by NEOGEN

CALVING EASE
★★

CED	BW	WW	YR	RADG	SC
-1	+4.6	+101 7%	+167 2%	+30 25%	+39
DOC	HP	CEM	MILK	\$EN	
+29	10%	+13.6	+3	+24	-31
CW	MARB	RE	BW	Adj. WW	WW Ratio
+83	4%	+66	+1.13 10%	88	847 119
\$M	\$W	\$F	\$B	\$C	
+87	10%	+85 4%	+124 10%	+185 20%	+327 10%

Lot 3 MAF Pinnacle 2425 [OHP]

Birth Date: 02-16-2024

Bull 21109087

Tattoo: 2425

SIRE: *CONNEALY PINNACLE AAA 20385876

MAF Magnitude 2573

DAM: B M PURPLE STAR 2857 AAA 19419639

B M Purple Star 234



ANGUSGS
Powered by NEOGEN

CALVING EASE
★★

CED	BW	WW	YR	RADG	SC
+4	+1.9	+82 15%	+149 10%	+31 20%	+1.40 20%
DOC	HP	CEM	MILK	\$EN	
+26	20%	+15.2 25%	+8	+31 20%	-47
CW	MARB	RE	BW	Adj. WW	WW Ratio
+74	15%	+81	+71	97	846 119
\$M	\$W	\$F	\$B	\$C	
+58	+75 20%	+119 10%	+179 20%	+290 25%	

- Additional frame size, extra length of body & depth of rib in this powerful Pinnacle son that we think so highly of. His Magnitude dam has a weaning ratio of 4/105.



MAF Pinnacle 2425 - Lot 3



MAF Pinnacle 469 - Lot 4

Lot 4 MAF Pinnacle 469

Birth Date: 02-28-2024 Bull #21108914

Tattoo: 469

SIRE: *CONNEALY PINNACLE AAA 20385876

ANGUSGS
Powered by HESSEY

DAM: *JACKIE LASS 158 OF TRIPP AAA 20166969

*Connealy Garrison

#Jackie Lass 87 of Tripp

CALVING EASE
★★★☆☆

CED	BW	WW	YR	RADG	SC
+12 10%	-4 20%	+92 3%	+161 3%	+29	+1.79 10%
DOC	HP	CEM	MILK	\$EN	
+17	+16.5 15%	+10	+41 1%	-44	
CW	MARB	RE	BW	Adj. WW	WW Ratio
+80 5%	+56	+51	70	813	114
\$M	\$W	\$F	\$B	\$C	
+77 20%	+100 1%	+117 15%	+157	+281	

- Impressive Pinnacle son - small headed, long spined, Lot 4 is a sure-shot heifer bull with growth numbers at weaning & yearling that rival the best cow bulls in the breed. His dam is a nicely-uddered, promising young Garrison daughter with a WR of 2/104 & his grandam is both a Pathfinder & donor.

Lot 5 MAF Pinnacle 443

Birth Date: 02-15-2024

Bull #21108911

Tattoo: 443

SIRE: *CONNEALY PINNACLE AAA 20385876

ANGUSGS
Powered by HESSEY

DAM: +*V A R Revelation 6299

+*JACKIE LASS 2111 OF TRIPP AAA 20448762

Jackie Lass 941 of Tripp

CALVING EASE
★★★☆☆

CED	BW	WW	YR	RADG	SC
+10 25%	+3	+80 20%	+138 20%	+28	+83
DOC	HP	CEM	MILK	\$EN	
+20	+13.8	+6	+27	-20	
CW	MARB	RE	BW	Adj. WW	WW Ratio
+63	+62	+77	70	731	103
\$M	\$W	\$F	\$B	\$C	
+83 10%	+81 10%	+106 25%	+158	+288	

- Here's a square-made, wide-topped, stretchy Pinnacle son that stands on a big foot with added bone. His dam is another one of those young Revelation daughters we like so much. Grandam is a donor.

Lot 6 MAF Pinnacle 451

Birth Date: 02-21-2024

Bull #21102371

Tattoo: 451

SIRE: *CONNEALY PINNACLE AAA 20385876

ANGUSGS
Powered by HESSEY

DAM: *MOGCKS BLACKCAP 247 OF TRIPP AAA 20522522

MAF National 201

+*Blackcap 928 of Tripp

CALVING EASE
★★★☆☆

CED	BW	WW	YR	RADG	SC
+9	+1.6	+88 10%	+157 5%	+29	+46
DOC	HP	CEM	MILK	\$EN	
+18	+10.2	+7	+32 15%	-35	
CW	MARB	RE	BW	Adj. WW	WW Ratio
+89 2%	+1.02 25%	+97 20%	79	642	90
\$M	\$W	\$F	\$B	\$C	
+62	+87 3%	+140 2%	+207 10%	+330 10%	

- Good-looking, level-topped bull that goes back to our 1107 donor & Pathfinder cow. Weaning & yearling EPDs in the top 10% of the breed.



Justin bred & raised the Reserve Champion Steer at the 2025 National Western Stock Show. Congratulations Justin & Rodgers Family! The steer goes back to an Angus bull (Antidote) that Justin owned & that several of our cows go back to as well.



Angie Hebbert & her Mogck Angus Farms bull enjoying his cake



Parents night 2024 - A big thanks to the tremendous coaches Campbell has been able to play for thus far



Campbell plays the flute & was honored in 2024 by being selected for Middle School All State Band that was held in Mitchell. A big thanks to her band director Brett Jacobson!

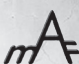


Connealy Hallmark

Lot Ref B Connealy Hallmark

Birth Date: 02-10-2021

Bull +*20132139

Tattoo: 10T 

SIRE: +*CONNEALY CONFIDENCE PLUS AAA 17585576

| #+*G A R Sure Fire

DAM: *BLACK CENA OF CONANGA 7150 AAA 19013217

| Black Cryna of Conanga 5429



ANGUSGS
Powered by NEAGEN

CED	BW	WW	YR	RADG	SC
+10 25%	+1 25%	+78 20%	+136 20%	+32 10%	+1.28 25%
DOC	HP	CEM	MILK	\$EN	
+24 25%	+11.2	+11 25%	+26	-15	
CW	MARB	RE	FAT		
+73 10%	+1.39 4%	+1.17 5%	+0.29		
\$M	\$W	\$F	\$G	\$B	\$C
+84 10%	+78 15%	+131 4%	+93 3%	+224 2%	+375 1%

- Hallmark was our pick of the Connealy 2022 Spring Production sale and a bull the Connealys are utilizing in their own herd.
- No other bull in the Angus breed can match his elite combination of calving ease, performance & carcass traits.
- Considerably larger scrotaled than most Confidence Plus sons.
- His 1st calf crop of daughters are soft made, easy fleshing, deep bodied & are entering Year 1 of production. His 1st sons were highly sought after in last year's sale.
- Semen is available & stored at 605 Sires— please call David or Damon for details.

Lot 7 MAF Hallmark 4118

Birth Date: 03-28-2024

Bull 21104757

Tattoo: 4118 

SIRE: +*CONNEALY HALLMARK AAA 20132139

| #Connealy Packer 547

DAM: #MEMORY 449 OF TRIPP AAA 17998994

| +Memory 799 of Tripp

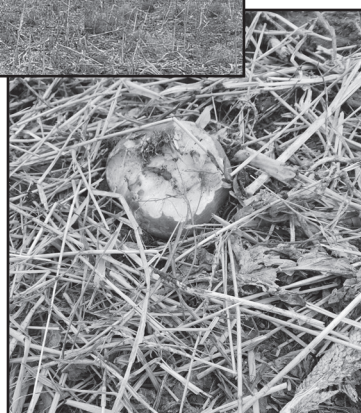
CALVING EASE
★★★★

CED	BW	WW	YR	RADG	SC
+12 10%	-.8 15%	+65	+119	+30 25%	+1.48 15%
DOC	HP	CEM	MILK	\$EN	
+33 2%	+12.4	+10	+34 10%	-26	
CW	MARB	RE	BW	Adj. WW	WW Ratio
+64	+93	+59	76	869	122
\$M	\$W	\$F	\$B	\$C	
+64	+70	+117 15%	+181 20%	+299 20%	

- Here's a younger Hallmark son that quickly caught up to and passed many of his contemporaries. He's long bodied, soft made and we think an exceptional heifer bull prospect. His 11-year-old Pathfinder dam is a 3rd generation female from our Memory cow family.



Cover crop that we had 150 cows grazing this fall and well into winter – it's amazing how content they are on it. Turnip is one of the 12 species found in this year's crop.



Lot 8 MAF Hallmark 489

Birth Date: 03-08-2024

Bull +*21134767

Tattoo: 489 

SIRE: +*CONNEALY HALLMARK AAA 20132139

| #*Connealy Rampart

DAM: MOGCKS BLACKCAP 055 OF TRIPP AAA 19855410

| Blackcap 517 of Tripp

CALVING EASE
★★★★

CED	BW	WW	YR	RADG	SC
+11 15%	-.5 15%	+77 25%	+132	+29	+82
DOC	HP	CEM	MILK	\$EN	
+30 10%	+14.1	+13 10%	+31 20%	-17	
CW	MARB	RE	BW	Adj. WW	WW Ratio
+69 20%	+1.07 20%	+1.05 15%	81	816	100
\$M	\$W	\$F	\$B	\$C	
+94 3%	+84 5%	+119 10%	+194 15%	+346 4%	

- This Hallmark son is the lone bull calf resulting from a conventional flush with our 055 Rampart sired donor cow & full sib to our feature Lot A heifer. Calving ease, growth & superior carcass traits are some of the attributes he possesses along with being mild mannered. His mother has an ideal udder & teat size, ratios WR of 2/112 and a YR of 2/104 & his grandmother is a Tanker daughter.



MAF Hallmark 489 - Lot 8

Ultrasound data along with yearling weights & scrotal measurements will be available prior to the sale



MAF Hallmark 452 - Lot 9

Lot
9

MAF Hallmark 452

Birth Date: 02-23-2024

Bull #21102364

Tattoo: 452



SIRE: +*CONNEALY HALLMARK AAA 20132139

#*S Whitlock 179

DAM: #+*BLACKCAP 88 OF TRIPP AAA 19268455

#Blackcap 1107 of Tripp



CED	BW	WW	YR	RADG	SC
+4	+7	+85 10%	+136 25%	+24	+90
DOC	HP	CEM	MILK	\$EN	
+24	+12.2	+12 15%	+28	-25	
CW	MARB	RE	BW	Adj. WW	WW Ratio
+65 25%	+87	+93 25%	84	799	112
\$M	\$W	\$F	\$B	\$C	
+74 25%	+88 3%	+99	+164	+287	

- Striking make & presence in this Hallmark son. He's easy going, has a smooth shoulder & yet carries a wide, lengthy top. His high-performing Whitlock dam has a remarkable weaning ratio of 5/107 and both her & the grandam are Pathfinders.

Lot
11

MAF Hallmark 467

Birth Date: 02-28-2024

Bull #21102369

Tattoo: 467



SIRE: +*CONNEALY HALLMARK AAA 20132139

#*Connealy Blackhawk 6198

DAM: #+*EILEENMERE 94 OF TRIPP AAA 19579849

#Eileenmere 223 of Tripp



CED	BW	WW	YR	RADG	SC
+8	+4	+76 25%	+134 25%	+30 25%	+1.97 3%
DOC	HP	CEM	MILK	\$EN	
+26 20%	+14.2	+6	+27	-19	
CW	MARB	RE	BW	Adj. WW	WW Ratio
+55	+1.06 25%	+64	82	746	105
\$M	\$W	\$F	\$B	\$C	
+76 25%	+76 15%	+96	+167	+293 25%	

- Another high quality Hallmark son. Small headed, big bodied, this bull resembles his sire in a lot of ways. His Blackhawk sired dam has a BR of 4/97, a WR of 4/108 and a YR of 2/103. His dam, grandam & great grandam are all Pathfinder status.

Lot
10

MAF Hallmark 438

Birth Date: 02-13-2024

Bull #21102362

Tattoo: 438



SIRE: +*CONNEALY HALLMARK AAA 20132139

#+*SydGen FATE 2800

DAM: ANN BREAKER 627 OF TRIPP AAA 18636407

Ann Breaker 620 of Tripp



CED	BW	WW	YR	RADG	SC
+13 10%	-.9 15%	+68	+125	+29	+49
DOC	HP	CEM	MILK	\$EN	
+23	+9.4	+9	+27	-14	
CW	MARB	RE	BW	Adj. WW	WW Ratio
+64	+1.44 10%	+82	72	747	105
\$M	\$W	\$F	\$B	\$C	
+68	+70	+114 15%	+204 10%	+333 10%	

- Excellent Hallmark son out of a 9-year-old Fate daughter that breeds back quickly every year. The bull is larger framed with a long, level top & hip.

Lot
12

MAF Hallmark 446

Birth Date: 02-17-2024

Bull #21104759

Tattoo: 446



SIRE: +*CONNEALY HALLMARK AAA 20132139

#*Basin Rainmaker 4404

DAM: *MEMORY 945 OF TRIPP AAA 19581138

Memory 676 of Tripp



CED	BW	WW	YR	RADG	SC
+13 10%	-.9 15%	+65	+110	+26	+91
DOC	HP	CEM	MILK	\$EN	
+25 25%	+15.4 20%	+14 5%	+24	-17	
CW	MARB	RE	BW	Adj. WW	WW Ratio
+53	+1.01 25%	+1.56 1%	71	626	88
\$M	\$W	\$F	\$B	\$C	
+74 25%	+65	+105	+190 15%	+320 10%	

- Hallmark son out of our 945 Rainmaker 4404 donor & maternal brother to Lot 19. Moderate in stature, he's an easy keeper, is small headed with a big hip.



DB Iconic G95 - Iconic is a popular Genex bull, he's a son of Stunner & offers a great phenotype with additional growth & carcass merit. Lot B & Lots 13-15 are full siblings sired by Iconic.



The dam of Lots 13-15 & Lot B when she was a heifer calf (2020)



MAF Iconic 416 - Lot 14



MAF Iconic 485 - Lot 15

Lot 13 MAF Iconic 49

Birth Date: 02-07-2024

Bull +*21108982

Tattoo: 49



ANGUS GS
Powered by NEOGEN



CED	BW	WW	YR	RADG	SC
+9	+3	+88 10%	+148 10%	+28	+1.43 20%
DOC	HP	CEM	MILK	\$EN	
+23	+11.8	+7	+25	-27	
CW	MARB	RE	BW	Adj. WW	WW Ratio
+58	+97	+51	83	948	100
\$M	\$W	\$F	\$B	\$C	
+74 25%	+86 4%	+88	+151	+270	

- Iconic is the popular Genex sire we chose to mate with our exciting young 090 Rampart daughter and boy do we like the results. Lot 13 was the heaviest of the flush mates at weaning, he's stout made, wide based, has a solid foundation of foot size & bone density & is extremely masculine from every angle.

Lot 14 MAF Iconic 416

Birth Date: 02-09-2024

Bull +*21108983

Tattoo: 416



ANGUS GS
Powered by NEOGEN



CED	BW	WW	YR	RADG	SC
+8	+5	+74	+122	+23	+91
DOC	HP	CEM	MILK	\$EN	
+19	+16.9 10%	+9	+30 25%	-7	
CW	MARB	RE	BW	Adj. WW	WW Ratio
+50	+1.59 3%	+37	85	823	100
\$M	\$W	\$F	\$B	\$C	
+94 3%	+83 10%	+87	+176 25%	+322 10%	

- Full sib to Lots 13 & 15 that has a touch more frame, a long level hip & additional substance of bone. His marbling EPD is at the top of the breed. This bull's mother has a weaning ratio of 3/110, a YR of 2/106 & is well on her way to Pathfinder status.

Lot 15 MAF Iconic 485

Birth Date: 03-06-2024

Bull +*21108981

Tattoo: 485



ANGUS GS
Powered by NEOGEN



SIRE: *DB ICONIC G95 AAA 19611994

#*Connealy Rampart

DAM: **BLACKCAP 090 OF TRIPP AAA 19842937

#Blackcap 1107 of Tripp

CED	BW	WW	YR	RADG	SC
+12 10%	+9	+85 10%	+140 20%	+27	+30
DOC	HP	CEM	MILK	\$EN	
+34 2%	+9.5	+11 25%	+26	-27	
CW	MARB	RE	BW	Adj. WW	WW Ratio
+50	+1.19 15%	+44	82	803	100
\$M	\$W	\$F	\$B	\$C	
+75 25%	+84 5%	+81	+154	+275	

- While a month younger than his full brothers, we think this bull might be the most complete. Huge middle, top & hip, extra muscle and stands on big foot with solid bone work. Bid with confidence on one of the elite herd bulls to sell.

Bull 21109218

Tattoo: 244 *m* *F*

SIRE: KRAYE BIG COUNTRY 0179 AAA 19902000

#*Musgrave 316 Stunner

DAM: B M MS ANN 2025 AAA 19876476

1. **MM**

CED	BW	W	YR	RADG	SC
-2	+88	+161	+33	+1.47	
	HP	CEM	MILK		
+23	+7.6	+2	+33	-42	
CW	MARB	RE	BW	Adj. WW	WW Ratio
+90	+51	+63	89	873	123
\$M	\$W	\$F	\$B		\$C
+52	+74	+142	+182	+288	

Bull 21109227

Tattoo: 2432 *m*

ANGUSGS
Powered by NEOGEN

SIRE: KRAYE BIG COUNTRY 0179 AAA 19902000

+S A V Bismarck 5682

DAM: +MAF MISS JETSTREAM 2568 AAA 18254634

M A F Miss Jetstream 2928

CED		BW		WW		YR		RADG		SC	
-1	+4.2	+81	15%	+133	25%	+26		+1.41	20%		
DOC		HP		CEM		MILK				SEN	
+11	+11.8			+6		+27					-26
CW		MARB		RE		BW		Adj. WW		WW Ratio	
+62	+44			+86		92		694			98
\$M		\$W		\$F		\$B				\$C	
+58	+70			+104		+148		+250			

- Good-looking, bigger-framed bull. Mother is a solid producing Bismarck daughter that goes back to our Daisy donor dam. Strong cow family.



Kraye Big Country 0179 - Sire of Lots 16 & 17
Big Country is an impressively-muscled, long-bodied, well-balanced, and easy-fleshing bull that moves with authority on an athletically-sound skeleton. He's worked extremely well here at Mogck Angus Farms.

MAKE YOUR CATTLE STAND OUT

You've made a significant investment in your genetics, but does the market recognize that? Stand out by differentiating your cattle with AngusLinkSM programs: AngusVerifiedSM and the Genetic Merit ScorecardSM. AngusVerified validates your calves are sired by registered Angus bulls and make your cattle stand apart from other black hides on sale day. The Genetic Merit Scorecard gives buyers the confidence they need to pay more for your quality calves.

Users of the AngusLink programs earn **\$13-15/CWT PREMIUMS** on average. Give us a call, and learn how to claim your competitive edge with AngusLink value-added programs.



AngusVerified and the Genetic Merit Scorecard are administered by IMI Global.

ANGUSLINKSM
VALUE ADDED PROGRAMS

ANGUSLINK.COM | 816-383-5100

Lot Ref C Connealy Craftsman Birth Date: 11-13-2020 Bull *20132505 Tattoo: 070R

SIRE: *SITZ RESILIENT 10208 AAA 19057457

DAM: #*BLACK CATHY OF CONANGA 8521 AAA 19323852
Black Carla of Conanga 450



ANGUSGS
Powered by NEOGEN

CED	BW	WW	YR	RADG	SC
+2	+1.8	+74	+130	+27	+32
DOC	HP	CEM	MILK	\$EN	
+19	+15.5	15%	+5	+36	5%
CW	MARB	RE	FAT		
+43	+1.06	15%	+83	+0.30	
\$M	\$W	\$F	\$G	\$B	\$C
+104	1%	+81	10%	+88	+73
					15%
					+161
					+313
					10%

- CRAFTSMAN is the no. 1 sire for registrations in the Angus breed in 2024.
- His progeny are sale toppers and pasture favorites because of their powerful phenotype. His progeny are expressively muscled, long-bodied with explosive growth and balance.
- As we rebuild the nation's cowherd, CRAFTSMAN excels for traits important to profitability like fertility and top 15% HP.



Connealy Craftsman

Lot 18 MAF Craftsman 2429 Birth Date: 02-18-2024 Bull 21106902 Tattoo: 2429

SIRE: *CONNEALY CRAFTSMAN AAA 20132505

DAM: #B M MISS ANN 2823 AAA 19268459
#B M Miss Ann 2242



ANGUSGS
Powered by NEOGEN

CED	BW	WW	YR	RADG	SC
+13	10%	-1.0	10%	+69	+118
DOC	HP	CEM	MILK	\$EN	
+16	+13.6	+14	5%	+39	2%
CW	MARB	RE	BW	Adj. WW	WW Ratio
+55	+76	+79	72	768	108
\$M	\$W	\$F	\$B	\$C	
+105	1%	+88	3%	+91	+149
					+298
					20%

- Exciting sire group & a dandy Craftsman son here. Smooth shouldered, small headed & yet has extra muscle with a big hip & top. His Capitalist 316 dam is elite; she has a BR of 5/96, a WR of 5/107 and a YR of 1/106. Both her & the grandam are Pathfinders.



MAF Craftsman
2429 - Lot 18

Lot 20 MAF Craftsman 2426 Birth Date: 02-17-2024 Bull 21106881 Tattoo: 2426

SIRE: *CONNEALY CRAFTSMAN AAA 20132505

DAM: BM MISS JETSTREAM 206 AAA 19876480
#BM Miss Jetstream 2519

ANGUSGS
Powered by NEOGEN

CED	BW	WW	YR	RADG	SC
+7	+1.6	+70	+121	+24	+51
DOC	HP	CEM	MILK	\$EN	
+14	+11.7	+9	+27	+5	
CW	MARB	RE	BW	Adj. WW	WW Ratio
+34	+48	+77	86	681	96
\$M	\$W	\$F	\$B	\$C	
+94	3%	+76	15%	+66	+112
					+239

- Craftsman son with an above average size hip. With Resilient, National & Union in the pedigree, here's another maternally strong bull. Grandam is a Pathfinder.



MAF Craftsman 418 - Lot 19

Lot 19 MAF Craftsman 418 Birth Date: 02-10-2024 Bull +*21106895 Tattoo: 418

SIRE: *CONNEALY CRAFTSMAN AAA 20132505

DAM: *MEMORY 945 OF TRIPP AAA 19581138
Memory 676 of Tripp



ANGUSGS
Powered by NEOGEN

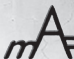
CED	BW	WW	YR	RADG	SC
+6	+5	+77	25%	+127	+28
DOC	HP	CEM	MILK	\$EN	
+24	+19.6	2%	+9	+34	10%
CW	MARB	RE	BW	Adj. WW	WW Ratio
+52	+1.26	15%	+1.15	10%	85
\$M	\$W	\$F	\$B	\$C	
+98	2%	+86	4%	+94	+183
					20%
					+335
					10%

- The only bull calf that resulted from an IVF flush of our 945 donor dam but one we are quite fond of. He's heavy muscled, moderately made with loads of red meat. His dam has the udder placement & teat size of a 1st calf heifer - highly maternal herd bull prospect. Full sib to the Lot C heifer!



Virginia Tech Statesman

Lot
Ref D **Virginia Tech Statesman**
Birth Date: 01-16-2021 Bull #20085208

Tattoo: 1J3 

SIRE: **TEHAMA PATRIARCH F028 AAA 18981191

**Ellingson Homestead 6030

DAM: +*VPI 310A RITA 9G6 ET AAA 19466228

AED Rita 310A



ANGUSGS
Powered by NECEGEN

CED	BW	WW	YR	RADG	SC
+4	+1.7	+88 5%	+164 2%	+33 10%	+82
DOC	HP	CEM	MILK	\$EN	
+11	+18.3 4%	+15 3%	+24	-34	
CW	MARB	RE	FAT		
+79 4%	+1.18 10%	+74	+115		
\$M	\$W	\$F	\$G	\$B	\$C
+75 20%	+73 20%	+133 3%	+72 15%	+205 5%	+341 4%

- STATESMAN progeny are quickly gaining attention across the county, as he is siring progeny with excellent phenotype, breed-leading growth and adding both maternal and end-product value.
- He is a larger-framed Patriarch son offering a unique EDP profile highlighting WW, YW, RADG, HP, PAP, Marbling and is one of our best for \$C.
- He consistently sires cattle with added length, extension and muscle with extra eye appeal, all while adding maternal and carcass value.

Lot
21 **MAF Statesman 245**

Birth Date: 02-05-2024

Bull #21106781

Tattoo: 245 

SIRE: *VIRGINIA TECH STATESMAN AAA 20085208

*Sitz Resilient 10208

DAM: BM MISS JETSTREAM 2214 AAA 20512268

#BM Miss Jetstream 2519



CED	BW	WW	YR	RADG	SC
+9	-9 15%	+81 15%	+144 15%	+28	+1.18
DOC	HP	CEM	MILK	\$EN	
+13	+17.5 10%	+12 15%	+33 10%	-26	
CW	MARB	RE	BW	Adj. WW	WW Ratio
+56	+1.03 25%	+28	64	795	112
\$M	\$W	\$F	\$B	\$C	
+86 10%	+87 3%	+91	+154	+286	

- A new sire group with fresh genetics. Statesman progeny have been very well received around the country with sons & daughters selling for record sale prices. This bull has a tremendous substance of bone, is square made with a big top. His 1st calf Resilient dam is off to a really nice start.

Lot
22 **MAF Statesman 2417** [OHP]

Birth Date: 02-13-2024

Bull #21106872

Tattoo: 2417 

SIRE: *VIRGINIA TECH STATESMAN AAA 20085208

*Sitz Dash 10277

DAM: B M PURPLE STAR 234 AAA 17629914

B M Purple Star 137



CED	BW	WW	YR	RADG	SC
+6	-2 20%	+66	+121	+25	+01
DOC	HP	CEM	MILK	\$EN	
+11	+16.0 20%	+8	+27	-26	
CW	MARB	RE	BW	Adj. WW	WW Ratio
+54	+79	+86	76	731	103
\$M	\$W	\$F	\$B	\$C	
+62	+63	+98	+158	+267	

- Smooth-shouldered heifer bull approved Statesman with added size. Dam is a 12-year-old Dash daughter with a BR of 10/95 - longevity in the blood.

CALVING EASE STAR DESIGNATIONS

Our bulls have been sorted into four groups pertaining to their calving ease.

- ★★★★ Heifer bull with excellent calving ease
- ★★★ Heifers and cows
- ★★ Best suited for young and mature cows
- ★ Best suited for mature cows

Lot
23 **MAF Statesman 436**

Birth Date: 02-12-2024

Bull #21106741

Tattoo: 436 

SIRE: *VIRGINIA TECH STATESMAN AAA 20085208

+*Connealy Pay Pal

DAM: BLACKCAP 272 OF TRIPP AAA 20518478

Blackcap 889 of Tripp



CED	BW	WW	YR	RADG	SC
+5	+4	+80 20%	+148 10%	+31 20%	+71
DOC	HP	CEM	MILK	\$EN	
+21	+15.0 25%	+13 10%	+25	-16	
CW	MARB	RE	BW	Adj. WW	WW Ratio
+71 15%	+86	+71	76	730	98
\$M	\$W	\$F	\$B	\$C	
+80 15%	+77 15%	+117 15%	+178 25%	+311 15%	

- Another smooth-fronted Statesman, this bull is a big weight gainer, has a level top and exhibits a nice Angus character look & type. Grandam was Campbell's 1st show heifer and is now 7 years old and in her prime & producing at a high level.

Lot
24 **MAF Statesman 2420**

Birth Date: 02-13-2024

Bull #21106782

Tattoo: 2420 

SIRE: *VIRGINIA TECH STATESMAN AAA 20085208

+*Deer Valley Wall Street

DAM: B M MISS ANN 229 AAA 20512264

#B M Miss Ann 2716



CED	BW	WW	YR	RADG	SC
+0	+2.9	+79 20%	+146 15%	+29	+75
DOC	HP	CEM	MILK	\$EN	
+2	+15.9 20%	+15 3%	+30 25%	-25	
CW	MARB	RE	BW	Adj. WW	WW Ratio
+72 15%	+1.41 10%	+75	86	687	97
\$M	\$W	\$F	\$B	\$C	
+73	+72 25%	+118 15%	+202 10%	+335 10%	

- High marbling EPD, exceptional growth bull. His dam is a 1st calf Wall Street, grandam is a Tanker & Pathfinder.



MAF Statesman 2420
- Lot 24

Lot 25 MAF Growth Fund 428

Birth Date: 02-11-2024

Bull #21106857

Tattoo: 428



ANGUSGS
Powered by NEOGEN

SIRE: #+*DEER VALLEY GROWTH FUND AAA 18827828

+*V A R Revelation 6299

DAM: *IMPACT GAL 238 OF TRIPP AAA 20448749

Impact Gal 21 of Tripp

CALVING EASE
★★★

CED	BW	WW	YR	RADG	SC
+4	+2.4	+84 10%	+152 10%	+34 10%	+49
DOC	HP	CEM	MILK	\$EN	
+20	+19.4 3%	+7	+28	-36	
CW	MARB	RE	BW	Adj. WW	WW Ratio
+73 15%	+54	+24	81	750	105
\$M	\$W	\$F	\$B	\$C	
+79 20%	+75 20%	+120 10%	+156	+281	

- Growth Fund does it again this year! Fantastic set of bulls including this guy out of a 1st calf Revelation daughter. Good-looking, level-topped bull that'll sire quick-growing calves.

Lot 26 MAF Growth Fund 2410

Birth Date: 02-08-2024

Bull #21106734

Tattoo: 2410



ANGUSGS
Powered by NEOGEN

SIRE: #+*DEER VALLEY GROWTH FUND AAA 18827828

*FREYS True Grit

DAM: B M MISS JETSTREAM 2232 AAA 20516361

B M Miss Jetstream 2939

CALVING EASE
★★★

CED	BW	WW	YR	RADG	SC
+3	+3.2	+84 10%	+150 10%	+31 20%	+92
DOC	HP	CEM	MILK	\$EN	
+25 25%	+9.7	+10	+26	-42	
CW	MARB	RE	BW	Adj. WW	WW Ratio
+72 15%	-19	+96 20%	88	714	100
\$M	\$W	\$F	\$B	\$C	
+49	+69	+114 15%	+130	+218	

- Here's a stout, deep-bodied, attractive Growth Fund son that we like quite a lot. I don't think there has been 1 person through the pen that hasn't noticed and asked about this bull. He's out of a first-calf True Grit daughter.



MAF Growth Fund 2410 - Lot 26



Deer Valley Growth Fund - Sire of Lots 25-27

One of the breed's most impactful sires in recent history - unparalleled customer satisfaction! Growth Fund has worked extremely well at Mogck Angus Farms.

Lot 27 MAF Growth Fund 2419

Birth Date: 02-13-2024

Bull #21106735

Tattoo: 2419



ANGUSGS
Powered by NEOGEN

SIRE: #+*DEER VALLEY GROWTH FUND AAA 18827828

MAF National 201

DAM: *B M PURPLE STAR 2238 AAA 20512276

B M Purple Star 2921

CALVING EASE
★★★

CED	BW	WW	YR	RADG	SC
+9	+1.4	+94 2%	+167 2%	+38 1%	+47
DOC	HP	CEM	MILK	\$EN	
+22	+18.6 4%	+6	+20	-33	
CW	MARB	RE	BW	Adj. WW	WW Ratio
+90 2%	+1.04 25%	+1.04 15%	74	710	100
\$M	\$W	\$F	\$B	\$C	
+79 20%	+82 10%	+150 1%	+226 3%	+372 1%	

- Out of a 1st calf National 201 daughter, this bull is wide backed, moderate & soft made. Phenomenal EPD profile.



MAF Growth Fund 2419 - Lot 27



We were blessed to welcome 2 new grandsons this past year (Teo & Saul)



Jeff & Angie Hebbert
& granddaughter
Lakyn with one of their
favorite Angus cows

Lot 28 MAF Wall Street 2449

Birth Date: 02-27-2024

Bull 21106775

Tattoo: 2449



SIRE: +*DEER VALLEY WALL STREET AAA 18827829



| #*Connealy Comrade 1385

DAM: B M MS ANN 2024 AAA 19876479

| B M MS Ann 2877



CED	BW	WW	YR	RADG	SC
+5	+8	+57	+107	+23	-17
DOC	HP	CEM	MILK	\$EN	
+17	+14.1	+3	+25		+0
CW	MARB	RE	BW	Adj. WW	WW Ratio
+40	+72	+49	88	683	96
\$M	\$W	\$F	\$B	\$C	
+74	25%	+58	+80	+133	+247

- The first of our Wall Street sons and this one has all the attributes of his sire. Added bone, wide from the point behind his front shoulder & carries that width all the way to his tail. His promising 5-year-old Comrade dam has a WR of 3/102 & a YR of 1/111.



Deer Valley Wall Street - Sire of Lots 28-31
Full brother to Growth Fund, Wall Street is a physically impressive bull that sires angular, easy-fleshing, beautifully-uddered females with good feet and moderate mature size.

Lot 29 MAF Wall Street 2444

Birth Date: 02-26-2024

Bull 21106791

Tattoo: 2444



SIRE: +*DEER VALLEY WALL STREET AAA 18827829



| #*A & B SpotLite 3065

DAM: B M ANN TRAVELER 2825 AAA 19268445

| B M Ann Traveler 2673



CED	BW	WW	YR	RADG	SC
+9	+5	+63	+113	+24	+1.13
DOC	HP	CEM	MILK	\$EN	
+18	+13.0	+8	+21		-19
CW	MARB	RE	BW	Adj. WW	WW Ratio
+43	+68	-.09	84	681	96
\$M	\$W	\$F	\$B	\$C	
+54	+56	+87	+130	+223	

- Square-made, wide-tracking Wall Street son that is safe to use on heifers.

Lot 31 MAF Wall Street 2431

Birth Date: 02-19-2024

Bull 21106777

Tattoo: 2431



SIRE: +*DEER VALLEY WALL STREET AAA 18827829



| #*Musgrave 316 Stunner

DAM: #SNOWFLAKE BURGESS 2937 AAA 19579254

| Snowflake Burgess 2642



CED		BW		WW		YR		RADG		SC	
+13	10%	-2.2	3%	+68		+119		+26		+93	
DOC		HP		CEM		MILK				\$EN	
+16		+14.9		25%		+11		25%		+23	
										-8	
CW		MARB		RE		BW		Adj. WW		WW Ratio	
+48		+1.00		25%		+23		74		669	
										94	
\$M		\$W		\$F		\$B				\$C	
+81		15%		+71		+93		+150		+276	

- Sure-shot, calving-ease Wall Street son that isn't short on performance & substance. His Stunner sired dam is a Pathfinder & has done a phenomenal job thus far recording a BR of 4/98, a WR of 4/104 & a YR of 3/104.

Lot 30 MAF Wall Street 2450

Birth Date: 02-27-2024

Bull 21106776

Tattoo: 2450



SIRE: +*DEER VALLEY WALL STREET AAA 18827829



| *MAF Watchout 2546

DAM: BM MS ANN 2948 AAA 19579258

| *BM Ms Ann 2551



CED	BW	WW	YR	RADG	SC
+6	+2.1	+72	+125	+26	+1.02
DOC	HP	CEM	MILK	\$EN	
+25	25%	+12.8	+9	+17	-17
CW	MARB	RE	BW	Adj. WW	WW Ratio
+52	+50	+24	87	678	95
\$M	\$W	\$F	\$B	\$C	
+64	+58	+96	+136	+240	

- Extra bone & additional pounds come weaning with this Wall Street son.



Grandsons Ari & Ellis continue to promote Angus beef in the big city.



Lot 1 MAF National 201

Birth Date: 02-04-2020

Bull 19876458

Tattoo: 201



SIRE: #*CONNEALY NATIONAL 390C AAA 18498059

HF Tiger Power 155X

DAM: B M MS EVILINA 2437 AAA 18000642

B M Ms Evilina 2027



ANGUSGS
Powered by NEOGEN

CED	BW	WW	YR	RADG	SC
+9	+1.1	+74	+135 25%	+31 15%	+38
DOC	HP	CEM	MILK	SEN	
+17	+13.0	+5	+19	-23	
CW	MARB	RE	FAT		
+70 15%	+76	+1.31 2%	-0.045	4%	
\$M	\$W	\$F	\$G	\$B	\$C
+56	+61	+124 10%	+70 20%	+194 10%	+308 15%

- Our high-selling bull from the 2021 sale that sold to RBM Livestock.
- 201 is the biggest-butted bull we've ever raised, he has a massive top & hip, is wide based and still maintains a heifer bull calving-ease EPD.
- No other bull we've used has performed better from weaning to yearling as National 201 does.
- Tremendous set of sons & 1 elite heifer headline this sale.
- Semen is stored at 605 Sires – please call Ryan Bergh at RBM Livestock for details.



MAF National 201

Lot 32 MAF National 484

Birth Date: 03-06-2024

Bull +*21102353

Tattoo: 484



SIRE: MAF NATIONAL 201 AAA 19876458

#+*LD Capitalist 316

DAM: #ANN BREAKER 047 OF TRIPP AAA 19855409

Ann Breaker 5117 of Tripp

ANGUSGS
Powered by NEOGEN

CALVING EASE
★★★☆☆

CED	BW	WW	YR	RADG	SC
+8	+1.1	+70	+120	+25	+62
DOC	HP	CEM	MILK	SEN	
+21	+11.3	+7	+17	-21	
CW	MARB	RE	BW	Adj. WW	WW Ratio
+60	+48	+1.09 10%	75	808	100
\$M	\$W	\$F	\$B	\$C	
+50	+58	+106 25%	+159	+256	

- The first of our 2 National 201 x Capitalist 316 (#047) full brothers and this is a darn good one. Added bone, yet small headed, he's moderate, deep flanked & has that trademark 201 big square butt. His young donor dam has been a rock star thus far with a BR of 3/100 & a WR of 3/114.

Lot 33 MAF National 496

Birth Date: 03-10-2024

Bull +*21102355

Tattoo: 496



SIRE: MAF NATIONAL 201 AAA 19876458

#+*LD Capitalist 316

DAM: #ANN BREAKER 047 OF TRIPP AAA 19855409

Ann Breaker 5117 of Tripp

ANGUSGS
Powered by NEOGEN

CALVING EASE
★★★☆☆

CED	BW	WW	YR	RADG	SC
+9	+2	+67	+115	+25	+1.25
DOC	HP	CEM	MILK	SEN	
+25 25%	+9.9	+5	+32 15%	-14	
CW	MARB	RE	BW	Adj. WW	WW Ratio
+68 20%	+35	+54	76	820	100
\$M	\$W	\$F	\$B	\$C	
+64	+74 20%	+116 15%	+154	+264	

- Full brother to Lot 32 & a bull that offers a little more frame than his brother.



MAF National 484 - Lot 32 & full sib to Lot 33

Lot 34 MAF National 464

Birth Date: 02-27-2024

Bull *21102368

Tattoo: 464



SIRE: MAF NATIONAL 201 AAA 19876458



ANGUSGS
Powered by NEOGEN

+*V A R Signal 7244

DAM: +*MOGCKS BLACKCAP 187 OF TRIPP AAA 20166985

#Blackcap 1107 of Tripp

CALVING EASE
★★★★★

CED		BW		WW		YR		RADG		SC	
+17	1%	-2.5	2%	+68		+124		+30	25%	+1.61	15%
DOC		HP		CEM		MILK				SEN	
+9		+10.3		+13		10%		+20		-20	
CW		MARB		RE		BW		Adj. WW		WW Ratio	
+59		+91		+1.05		15%		69		774 109	
\$M		\$W		\$F		\$B				\$C	
+53		+63		+107		25%		+178		25% +284	

- High quality National 201 son. Sleep-all-night calving ease without sacrificing pounds at weaning. This bull has good base width, a wide top & big hip. His 4-year-old Signal sired dam has a BR of 2/96 & WR of 2/105 and she's a full sister to the dams of Lots 48 & 61.

Lot 36 MAF National 2411

Birth Date: 02-08-2024

Bull 21102382

Tattoo: 2411



SIRE: MAF NATIONAL 201 AAA 19876458

ANGUSGS
Powered by NEOGEN

*MAF Destination 423

DAM: #BM MS ANN 2852 AAA 19267218

*BM Ms Ann 2551

CALVING EASE
★★★★★

CED		BW		WW		YR		RADG		SC				
+13	10%	-1.0	10%	+51		+98		+27		+74				
DOC			HP			CEM			MILK		\$EN			
+16			+12.7			+9			+24		-14			
CW			MARB			RE			BW		Adj. WW		WW Ratio	
+47			+31			+74			85		676		95	
\$M			\$W			\$F			\$B			\$C		
+49			+48			+94			+135			+224		

- We like this 201 son quite a lot. He has a big hip & hind leg, is wide from behind with loads of substance. His Destination dam is a Pathfinder with a WR of 5/105.

Lot 35 MAF National 2414

Birth Date: 02-10-2024

Bull 21102378

Tattoo: 2414



SIRE: MAF NATIONAL 201 AAA 19876458



ANGUSGS
Powered by NEOGEN

+*Connealy Black Granite

DAM: B M MISS JETSTREAM 2841 AAA 19294060

#B M Miss Jetstream 2618

CALVING EASE
★★★★★

CED	BW		WW	YR	RADG		SC	
+9	-.5	15%	+67	+124	+32	15%	+37	
DOC		HP		CEM		MILK	\$EN	
+18		+11.2		+5		+21	-24	
CW		MARB		RE		BW	Adj. WW	WW Ratio
+46		+70		+1.01 15%		84	738	104
\$M		\$W		\$F		\$B		\$C
+50		+59		+96		+158		+255

- Stretchy, wide-topped, complete Angus bull. These 201 sons only get better from weaning to yearling. His Black Granite dam has a BR of 5/95, WR of 5/103 and a YR of 3/104. Grandam is a Pathfinder.

Lot 37 MAF National 2443

Birth Date: 02-25-2024

Bull 21102377

Tattoo: 2443



SIRE: MAF NATIONAL 201 AAA 19876458

ANGUSGS
Powered by NEOGEN

#*A & B SpotLite 3065

DAM: MISS JETSTREAM 2710 AAA 18886648

+MAF Miss Jetstream 2535

CALVING EASE
★★★★★

CED	BW	WW	YR	RADG	SC
+4	+2.7	+82 15%	+137 20%	+26	+82
DOC	HP	CEM	MILK	\$EN	
+20	+14.1	+6	+14	-28	
CW	MARB	RE	BW	Adj. WW	WW Ratio
+67 25%	+75	+47	91	738	104
\$M	\$W	\$F	\$B	\$C	
+53	+60	+110 20%	+164	+266	

- High gaining National son that has extra length of body & a nice level top. His 8-year-old dam has a WR of 6/102.



MAF National 2414 - Lot 35

Lot
38 **MAF National 2421**
Birth Date: 02-14-2024 Bull 21102388

Tattoo: 2421 **MAF**

SIRE: MAF NATIONAL 201 AAA 19876458



DAM: SNOWFLAKE BURGESS 2814 AAA 19268442
Snowflake Burgess 2642



CED		BW		WW		YR		RADG		SC															
+13	10%	-2.5	2%	+57		+106		+29		-.08															
DOC			HP			CEM			MILK			\$EN													
+14			+12.4			+11			25%			+22		+0											
CW			MARB			RE			BW			Adj. WW			WW Ratio										
+50			+.66			+1.17			10%			72			716			101							
\$M				\$W				\$F				\$B				\$C									
+72				+59				+108				25%				+168				+290				25%	

- Another big butted 201 son that will work great on heifers. His Comrade sired dam has a WR of 5/101.

Lot
40 **MAF National 247**
Birth Date: 02-08-2024 Bull *21102374

Tattoo: 247 **MAF**

SIRE: MAF NATIONAL 201 AAA 19876458



DAM: *MOGCKS ANN 2117 OF TRIPP AAA 20173471
B M Ann 2444



CED		BW		WW		YR		RADG		SC				
+11	15%	+9		+79 20%		+141 20%		+32 15%		+1.27 25%				
DOC			HP			CEM			MILK			\$EN		
+23			+14.3			+7			+27			-25		
CW			MARB			RE			BW		Adj. WW		WW Ratio	
+68 20%			+63			+1.15 10%			76		700		98	
\$M			\$W			\$F			\$B			\$C		
+69			+76 15%			+111 20%			+174 25%			+295 25%		

- Balanced EPD profile on this low birth, long-bodied 201 son that's out of a young Stronghold daughter.

Lot
39 **MAF National 2430**
Birth Date: 02-18-2024 Bull 21109102

Tattoo: 2430 **MAF**

SIRE: MAF NATIONAL 201 AAA 19876458



DAM: +MAF MISS JETSTREAM 2654 AAA 18602469
M A F Miss Jetstream 2928



CED		BW		WW		YR		RADG		SC				
+8		+5		+65		+121		+31 20%		+20				
DOC			HP			CEM			MILK			\$EN		
+26 20%			+9.7			+2			+22			-15		
CW			MARB			RE			BW		Adj. WW		WW Ratio	
+44			+37			+82			89		719		101	
\$M			\$W			\$F			\$B			\$C		
+46			+58			+90			+134			+220		

- Study this one and you'll see he is absolutely packed full of muscle. Massive in his bone structure, across his top & from behind. He reminds us a lot of his sire.

Lot
41 **MAF National 2423**
Birth Date: 02-14-2024 Bull *21102384

Tattoo: 2423 **MAF**

SIRE: MAF NATIONAL 201 AAA 19876458



DAM: MOGCKS ANN 2133 OF TRIPP AAA 20173476
BM Ann 2980



CED		BW		WW		YR		RADG		SC		
+10	25%	-1.8	5%	+69		+132		+33	10%	+20		
DOC			HP			CEM			MILK			\$EN
+23			+12.9			+6			+21			-20
CW			MARB			RE			BW		Adj. WW	WW Ratio
+51			+52			+1.16 10%			68		674	95
\$M			\$W			\$F			\$B		\$C	
+59			+63			+97			+154		+259	

- Calving ease - rapid growth - wide from behind & across his top, here's a moderate-made 201 son out of a 4-year-old Deer Valley Unique daughter.



MAF National 2430 - Lot 39

Lot
42 **MAF National 463**
Birth Date: 02-27-2024 Bull #21102367

Tattoo: 463 **MAF**

ANGUSGS
Powered by NEOGEN

SIRE: MAF NATIONAL 201 AAA 19876458

| #*Connealy Confidence 0100

DAM: +*JACKIE LASS 421 OF TRIPP AAA 17999052

| Jackie Lass 032 of Tripp

CALVING EASE
★★★★★

CED	BW	WW	YR	RADG	SC
+7	+1.2	+66	+113	+24	+93
DOC	HP	CEM	MILK	\$EN	
+2	+10.4	+9	+22	-13	
CW	MARB	RE	BW	Adj. WW	WW Ratio
+55	+24	+1.17	10%	58	735 103
\$M	\$W	\$F	\$B	\$C	
+52	+61	+103	+144	+239	

- Lots 42 & 43 are twins; their mother is a powerful Confidence daughter & grandmother is the dam of Tanker. This bull is big boned, wide from behind, built square & is moderate in frame size.



MAF Annuity 43 - Lot 45

Lot
43 **MAF National 462**
Birth Date: 02-27-2024 Bull #21102366

Tattoo: 462 **MAF**

ANGUSGS
Powered by NEOGEN

SIRE: MAF NATIONAL 201 AAA 19876458

| #*Connealy Confidence 0100

DAM: +*JACKIE LASS 421 OF TRIPP AAA 17999052

| Jackie Lass 032 of Tripp

CALVING EASE
★★★★★

CED	BW		WW	YR	RADG		SC		
+8	-2	20%	+61	+100	+23		-32		
DOC		HP		CEM		MILK	\$EN		
+10		+12.5		+8		+21	+0		
CW		MARB		RE		BW	Adj. WW	WW Ratio	
+47		+34		+1.03		15%	65	697	98
\$M		\$W		\$F		\$B		\$C	
+70		+62		+96		+138		+249	

- Of the 2, this one is the safer bet to use on heifers. Very similar in scale & design to his twin.

Lot
45 **MAF Annuity 43**
Birth Date: 01-29-2024 Bull #21106436

Tattoo: 43 **MAF**

ANGUSGS
Powered by NEOGEN

SIRE: *CAR DON ANNUITY 114 AAA 19720973

| *TEF Outside 514

DAM: #KR QUEEN LASSIE 8545 AAA 19164535

| #KR Queen Lassie 6305

CALVING EASE
★★★★★

CED	BW	WW	YR	RADG	SC
+7	+7	+96 2%	+163 3%	+29	+96
DOC	HP	CEM	MILK	SEN	
+26 20%	+16.9 10%	+5	+34 10%	-52	
CW	MARB	RE	BW	Adj. WW	WW Ratio
+83 4%	+27	+59	84	866	122
\$M	\$W	\$F	\$B	\$C	
+74 25%	+95 1%	+124 10%	+154	+274	

- Car Don Annuity son that resulted from the purchase of a bred cow in the Krebs 2023 female sale. He gained rapidly from birth to weaning and has kept the pedal to the metal since as well. Bigger framed, super long bodied, this bull is in the top 1% for \$Weaning & his dam is a big-bodied, attractive female in the prime of her life & boasts a WR of 5/107 & a YR of 4/105.

Lot
44 **MAF National 2424**
Birth Date: 02-14-2024 Bull 21102375

Tattoo: 2424 **MAF**



ANGUSGS
Powered by NEOGEN

SIRE: MAF NATIONAL 201 AAA 19876458

| #*Musgrave 316 Stunner

DAM: MAF MISS JETSTREAM 2032 AAA 19876469

| +MAF Miss Jetstream 2535

CALVING EASE
★★★★★

CED		BW		WW		YR		RADG		SC	
+16	2%	-6	15%	+67		+121		+25		+87	
DOC			HP			CEM			MILK		
+11			+18.1 10%			+8			+20 -16		
CW			MARB			RE			BW		Adj. WW
+63			+99 25%			+69			78		659 93
\$M			\$W			\$F			\$B		\$C
+63			+61			+115 15%			+185 20%		+303 20%

- Low birth 201 son out of an attractive 5-year-old Stunner daughter.



Car Don Annuity 114 - Sire of Lot 45

Lot 46 MAF Valid 456

Birth Date: 02-26-2024

Bull *21102365

Tattoo: 456



SIRE: *KR VALID 2177 AAA 20432083



DAM: +*KR LASS 2042 AAA 20449433

*KR Cadillac Ranch

KR Lass 5457



CED	BW	WW	YR	RADG	SC
+8	-2	20%	+71	+114	+24
DOC	HP	CEM	MILK	\$EN	
+23	+7.4	+15	3%	+28	-22
CW	MARB	RE	BW	Adj. WW	WW Ratio
+39	+41	+69	77	718	101
\$M	\$W	\$F	\$B	\$C	
+57	+75	20%	+78	+122	+215

- Out of a 1st calf Cadillac Ranch female we purchased from Krebs, this bull's sire goes back to both Finnegan & Panther Creek Incredible - the pedigree is unique, the bull is moderate, square made & attractive.



Elbanna of Conanga 1209 - She's the great grandam of Lots 47-56 & best known as the mother of Confidence Plus. Her grandson, Upscale 8246 & sire of Lots 47-56 was one of our picks of the Connealy 2023 Spring sale. He has a massive hip, tremendous muscle, he's wide based and has substantial bone. He's been a tremendous breeder & we think his sons speak for themselves.

Lot 47 MAF Upscale 430

Birth Date: 02-11-2024

Bull *21102360

Tattoo: 430



SIRE: *CONNEALY UPSCALE 8246 AAA 20383917



DAM: #+*BASIN PAYWEIGHT 1682

Impact Gal 21 of Tripp



CED	BW	WW	YR	RADG	SC
-1	+3.1	+79	20%	+136	25%
DOC	HP	CEM	MILK	\$EN	
+17	+11.5	+4	+26	-23	
CW	MARB	RE	BW	Adj. WW	WW Ratio
+64	+92	+37	94	886	125
\$M	\$W	\$F	\$B	\$C	
+64	+71	+113	20%	+175	25%

- Super powerful Upscale son to lead off this sire group. Full of muscle, huge top & hip & moves with ease. His impressive 5-year-old Payweight 1682 dam has a WR of 2/111.

Lot 48 MAF Upscale 470

Birth Date: 02-29-2024

Bull *21102354

Tattoo: 470



SIRE: *CONNEALY UPSCALE 8246 AAA 20383917



DAM: +*V A R Signal 7244

#Blackcap 1107 of Tripp



CED	BW	WW	YR	RADG	SC
+11	15%	-3	20%	+82	15%
DOC	HP	CEM	MILK	\$EN	
+23	+13.0	+6	+31	20%	-25
CW	MARB	RE	BW	Adj. WW	WW Ratio
+61	+48	+81	78	841	118
\$M	\$W	\$F	\$B	\$C	
+76	25%	+87	3%	+105	+153

- Here's another thick, heavy-muscled, big-hipped Upscale son. Safe to use on heifers without sacrificing performance. His Signal sired dam is off to a great start with a WR of 2/111 & a YR of 1/105.



MAF Upscale 470 - Lot 48



MAF Upscale 4102 - Lot 49



2022 Stronghold son & maternal brother to Lot 49

Lot
49

MAF Upscale 4102

Birth Date: 03-13-2024

Bull *21102356

Tattoo: 4102



SIRE: *CONNEALY UPSCALE 8246 AAA 20383917



#*Connealy Blackhawk 6198

DAM: +*EILEENMERE 911 OF TRIPP AAA 19650382

#Eileenmere 223 of Tripp



CED		BW	WW		YR		RADG		SC		
+10	25%	+1.0		+85	10%	+146	15%	+32	15%	+1.94	4%
DOC			HP		CEM		MILK		\$EN		
+25	25%	+11.2		+2			+27			-34	
CW		MARB		RE		BW		Adj. WW		WW Ratio	
+64		+26		+77		72		821		115	
\$M		\$W		\$F		\$B		\$C			
+58		+81		10%		+101		+137		+236	

- This guy will catch your eye - he has a tremendous look, heavy muscled, larger boned; he's complete in every facet. His Blackhawk/Prowler dam has a BR of 4/96, a WR of 4/108 and a YR of 2/102. Both the grandam & great grandam are Pathfinders.

Lot
50

MAF Upscale 448

Birth Date: 02-19-2024

Bull *21104760

Tattoo: 448



SIRE: *CONNEALY UPSCALE 8246 AAA 20383917



#*M A F Tanker 23

DAM: #MEMORY 640 OF TRIPP AAA 18636351

Memory 25 of Tripp



CED		BW		WW		YR		RADG		SC	
+5		+2.2		+77		25%		+136		25%	
								+27		+84	
DOC			HP			CEM			MILK		
+27			15%			+11.2			+2		
									+22		
									-30		
CW			MARB			RE			BW		
									Adj. WW		
+59			+20			+40			80		
									775		
									109		
\$M				\$W				\$F			
\$B				\$C							
+54				+64				+97			
								+126			
								+217			

- Yet another stud of an Upscale son. The bull is heavily constructed, has a big middle & an abundance of muscle. His Tanker sired dam is one of the highest performing females we've ever raised. She's a Pathfinder, is 9 years old, her udder is fantastic and she has a WR of 7/112 & a YR of 4/112.



2022 Growth Fund son & maternal brother to Lot 50



2024 Resilient son & maternal brother to Lot 50



MAF Upscale 448 - Lot 50

Lot
51 **MAF Upscale 442**
Birth Date: 02-15-2024 Bull *21102363

Tattoo: 442 

SIRE: *CONNEALY UPSCALE 8246 AAA 20383917

ANGUSGS
Powered by NEOGEN

| #+*K C F Bennett Fortress

DAM: IMPACT GAL 738 OF TRIPP AAA 18892762

| #Impact Gal 539 of Tripp

CALVING EASE
★★★

CED	BW	WW	YR	RADG	SC
+8	+1.8	+75	+135 25%	+34 10%	+1.93 4%
DOC	HP	CEM	MILK	\$EN	
+0	+7.3	+10	+23	-22	
CW	MARB	RE	BW	Adj. WW	WW Ratio
+41	+45	+55	74	747	105
\$M	\$W	\$F	\$B	\$C	
+42	+66	+82	+128	+208	

- Heavy-muscled, wonderful-profiling Upscale son. He's deep sided, long bodied, wide based and expressive over his top. His 8-year-old Fortress sired dam has a WR of 6/102 & a YR of 2/105.

Lot
54 **MAF Upscale 468**
Birth Date: 02-28-2024 Bull *21102350

Tattoo: 468 

SIRE: *CONNEALY UPSCALE 8246 AAA 20383917

ANGUSGS
Powered by NEOGEN

| KR Mojo 8520

DAM: +*MISS SNOWFLAKE 120 OF TRIPP AAA 20167249

| +*M A F Miss Snowflake 0311

CALVING EASE
★★★

CED	BW	WW	YR	RADG	SC
+11 15%	+1.4	+68	+124	+30 25%	+1.13
DOC	HP	CEM	MILK	\$EN	
+19	+13.6	+11 25%	+19	-16	
CW	MARB	RE	BW	Adj. WW	WW Ratio
+41	+51	+54	72	693	97
\$M	\$W	\$F	\$B	\$C	
+62	+57	+85	+131	+232	

- Unique pedigree, here's a good-looking rascal that's soft made, has a big center and we think is highly maternal. His 4-year-old Mojo dam has a BR of 2/94, WR of 2/100 and a YR of 1/105.

Lot
52 **MAF Upscale 4119**
Birth Date: 03-28-2024 Bull *21102358

Tattoo: 4119 

SIRE: *CONNEALY UPSCALE 8246 AAA 20383917

ANGUSGS
Powered by NEOGEN

| #+*Deer Valley Growth Fund

DAM: ANN BREAKER 166 OF TRIPP AAA 20166981

| Ann Breaker 5117 of Tripp

CALVING EASE
★★★

CED	BW	WW	YR	RADG	SC
+7	+2.5	+85 10%	+137 20%	+23	+1.09
DOC	HP	CEM	MILK	\$EN	
+22	+11.2	+6	+25	-20	
CW	MARB	RE	BW	Adj. WW	WW Ratio
+66 25%	+0.7	+76	75	767	108
\$M	\$W	\$F	\$B	\$C	
+78 20%	+81 10%	+104	+132	+249	

- Small-headed Upscale son out of a 4-year-old Growth Fund daughter.

Lot
55 **MAF Upscale 453**
Birth Date: 02-25-2024 Bull *21104761

Tattoo: 453 

SIRE: *CONNEALY UPSCALE 8246 AAA 20383917

ANGUSGS
Powered by NEOGEN

| #*Connealy Rampart

DAM: #MOGCKS MEMORY 075 OF TRIPP AAA 19855406

| #Memory 449 of Tripp

CALVING EASE
★★★

CED	BW	WW	YR	RADG	SC
+6	+3	+52	+90	+18	+74
DOC	HP	CEM	MILK	\$EN	
+23	+9.8	+6	+28	+8	
CW	MARB	RE	BW	Adj. WW	WW Ratio
+35	+75	+40	68	684	96
\$M	\$W	\$F	\$B	\$C	
+77 20%	+60	+71	+125	+239	

- Low birth, small-headed bull out of a high-flying Rampart daughter that has a BR of 3/100, WR of 3/110 and a yearling ratio of 2/112.

Lot
53 **MAF Upscale 4110**
Birth Date: 03-17-2024 Bull *21102357

Tattoo: 4110 

SIRE: *CONNEALY UPSCALE 8246 AAA 20383917

ANGUSGS
Powered by NEOGEN

| #*Connealy Blackhawk 6198

DAM: JACKIE LASS 941 OF TRIPP AAA 19581135

| +Jackie Lass 420 of Tripp

CALVING EASE
★★★

CED	BW	WW	YR	RADG	SC
+8	+1.3	+78 20%	+136 25%	+30 25%	+1.36 20%
DOC	HP	CEM	MILK	\$EN	
+23	+13.7	+2	+13	-29	
CW	MARB	RE	BW	Adj. WW	WW Ratio
+49	+0.3	+89 25%	80	704	99
\$M	\$W	\$F	\$B	\$C	
+45	+58	+91	+120	+201	

- Stretchy, heavy-muscled Upscale son out of our 941 Blackhawk donor who has a BR of 4/97, WR of 4/102 and a YR of 3/104.

Lot
56 **MAF Upscale 423**
Birth Date: 02-10-2024 Bull *21102372

Tattoo: 423 

SIRE: *CONNEALY UPSCALE 8246 AAA 20383917

ANGUSGS
Powered by NEOGEN

| #*Connealy Blackhawk 6198

DAM: MOGCKS QUAVIDE 062 OF TRIPP AAA 19855423

| Quavide 428 of Tripp

CALVING EASE
★★★

CED	BW	WW	YR	RADG	SC
+8	+9	+68	+111	+25	+46
DOC	HP	CEM	MILK	\$EN	
+19	+12.4	+3	+18	-10	
CW	MARB	RE	BW	Adj. WW	WW Ratio
+29	+16	+59	80	612	86
\$M	\$W	\$F	\$B	\$C	
+55	+61	+71	+101	+186	

- Square-hipped, larger-framed Upscale son. His Blackhawk dam has a WR of 3/103 & YR of 2/106.

Lot
57 **MAF Legendary 2442**
Birth Date: 02-24-2024 Bull #21102386

Tattoo: 2442 **MAF**

SIRE: +*CONNEALY LEGENDARY 7150 8158 AAA 20131142



ANGUSGS
Powered by NEOGEN

DAM: *BM MS ANN 2551 AAA 18455585

B M Ms Ann 2155

CALVING EASE
★

CED	BW	WW	YR	RADG	SC
-6	+5.6	+86 10%	+137 20%	+25	+1.17
DOC	HP	CEM	MILK	\$EN	
+10	+9.3	+2	+11	-22	
CW	MARB	RE	BW	Adj. WW	WW Ratio
+68 20%	+71	+49	97	779	110
\$M	\$W	\$F	\$B	\$C	
+39	+54	+109 25%	+167	+256	

• Larger-framed, high-performing Legendary son. His sire is a beast and we would expect progeny to perform & gain at a high level. This bull's 10-year-old Alliance dam has a WR of 7/104.

Lot
59 **MAF Legendary 2484**
Birth Date: 04-13-2024 Bull #21102381

Tattoo: 2484 **MAF**

SIRE: +*CONNEALY LEGENDARY 7150 8158 AAA 20131142



ANGUSGS
Powered by NEOGEN

DAM: B M MISS EVILINA 2023 AAA 19935382

#B M Miss Evilina 266

CALVING EASE
★★★

CED	BW	WW	YR	RADG	SC
+7	+1.0	+84 10%	+145 15%	+26	+1.40 20%
DOC	HP	CEM	MILK	\$EN	
+18	+12.1	+5	+12	-18	
CW	MARB	RE	BW	Adj. WW	WW Ratio
+68 20%	+84	+74	78	720	101
\$M	\$W	\$F	\$B	\$C	
+57	+67	+107 25%	+171	+279	

• Small headed, low birth Legendary son that comes from a tremendous young National dam that has a BR of 3/98 & WR of 3/112. A powerful full brother sold in our 2024 sale.



MAF Legendary 2460 - Lot 58

Lot
58 **MAF Legendary 2460**
Birth Date: 03-05-2024 Bull 21102383

Tattoo: 2460 **MAF**

SIRE: +*CONNEALY LEGENDARY 7150 8158 AAA 20131142



ANGUSGS
Powered by NEOGEN

DAM: #B M MISS ANN 2938 AAA 19579255

#B M Miss Ann 2427

CALVING EASE
★★★

CED	BW	WW	YR	RADG	SC
+8	+7	+70	+119	+24	+78
DOC	HP	CEM	MILK	\$EN	
+16	+15.7 20%	+8	+21	-27	
CW	MARB	RE	BW	Adj. WW	WW Ratio
+63	+1.19 15%	+1.20 10%	92	697	98
\$M	\$W	\$F	\$B	\$C	
+67	+62	+108 25%	+196 10%	+321 10%	

• High octane, heavy-muscled, long-bodied bull that comes from a phenomenal cow family. 3 generations of Pathfinder dams back this bull and his Capitalist 316 mother has a WR of 4/114 and a YR of 2/107.



2024 Sale Day - Thank you to our customers!



Lot Ref F Connealy Concept 947M

Birth Date: 11-04-2021

Bull *20383823

Tattoo: 115K



ANGUS
Powered by NEOGEN

SIRE: +*CONNEALY CONCEPT AAA 19548015

+*Connealy Maternal Made

DAM: *PAULA PRIMA OF CONANGA 947M AAA 19855874

+*Portia of Conanga 637P

CED	BW	WW	YR	RADG	SC
+15	3%	-2.5	2%	+69	+137
20%					20%
3%					3%
15%					15%
DOC	HP	CEM	MILK	\$EN	
+29	10%	+14.5	25%	+16	2%
				+23	
					-18
CW	MARB	RE	FAT		
+38		+51		+38	
					+046
\$M	\$W	\$F	\$G	\$B	\$C
+75	20%	+65		+86	+41
					+127
					+240

- Our calving-ease pick from the 2023 Connealy bull sale; we've been quite happy with our Concept sons thus far.
- He's phenotypically pleasing, he's docile, has a slick hair coat that is dark black year-round.
- His sons are highly maternal & will make fantastic heifer bulls.



Connealy Concept 947M

Lot 60 MAF Concept 444

Birth Date: 02-15-2024

Bull 21106006

Tattoo: 444



ANGUS
Powered by NEOGEN

SIRE: *CONNEALY CONCEPT 947M AAA 20383823

+*Silveiras Style 9303

DAM: +ANN BREAKER 234 OF TRIPP AAA 20452126

Ann Breaker 135 of Tripp

CED	BW	WW	YR	RADG	SC
+3	+2.0	+69	+123	+26	+1.24
DOC	HP	CEM	MILK	\$EN	
+20	+13.1	-1	+23		-17
CW	MARB	RE	BW	Adj. WW	WW Ratio
+33	+14	+26	96	789	106
\$M	\$W	\$F	\$B	\$C	
+55	+61	+69	+93		+176

- Impressive weaning weight on the first of the Concept sons. We're excited about this larger-framed, long-bodied bull. He's out of a 1st calf Style heifer that Campbell showed and we think his progeny will be the front pasture kind.

Lot 62 MAF Concept 417

Birth Date: 02-09-2024

Bull *21104758

Tattoo: 417



ANGUS
Powered by NEOGEN

SIRE: *CONNEALY CONCEPT 947M AAA 20383823

##Musgrave Aviator

DAM: MEMORY 973 OF TRIPP AAA 19650381

#Memory 252 of Tripp

CED	BW	WW	YR	RADG	SC
+8	-6	15%	+60	+115	+31
20%					20%
15%					15%
20%					20%
DOC	HP	CEM	MILK	\$EN	
+14	+12.5	+17	1%	+19	-11
CW	MARB	RE	BW	Adj. WW	WW Ratio
+47	+52	+1.12	10%	62	687
					97
\$M	\$W	\$F	\$B	\$C	
+49	+52	+104	+160		+257

- Smooth-shouldered Concept son that stands a little taller - grandam is a beautiful big-bodied Pathfinder.

Lot 61 MAF Concept 431

Birth Date: 02-12-2024

Bull *21102361

Tattoo: 431



ANGUS
Powered by NEOGEN

SIRE: *CONNEALY CONCEPT 947M AAA 20383823

+*V A R Signal 7244

DAM: +*MOGCKS BLACKCAP 189 OF TRIPP AAA 20166984

#Blackcap 1107 of Tripp

CED	BW	WW	YR	RADG	SC
+11	15%	-6	15%	+77	25%
25%					25%
15%					15%
25%					25%
DOC	HP	CEM	MILK	\$EN	
+30	10%	+12.6	+14	5%	+21
					-16
CW	MARB	RE	BW	Adj. WW	WW Ratio
+61	+53	+36	77	779	110
\$M	\$W	\$F	\$B	\$C	
+75	25%	+73	25%	+113	20%
					+154
					+275

- This soggy-made, deep-bodied, long-spined bull will certainly catch your eye. He's impressive from every angle & his dam is another one of those sensational Signal sired dams; she has a WR of 2/107.



MAF Concept 431 - Lot 61

Lot 63 MAF Concept 45

Birth Date: 02-03-2024

Bull #21106005

Tattoo: 45



SIRE: *CONNEALY CONCEPT 947M AAA 20383823

ANGUSGS
Powered by NEOGEN

| +*MAF Maxim 915

DAM: MOGCK BURGESS 173 OF TRIPP AAA 20147480

| Burgess 884 of Tripp

CALVING EASE
★★★★

CED		BW		WW		YR		RADG		SC	
+15	3%	-3.6	1%	+57		+107		+26		+1.36	20%
DOC		HP		CEM		MILK				\$EN	
+22		+10.0		+15		3%		+18		-11	
CW		MARB		RE		BW		Adj. WW		WW Ratio	
+38		+53		+36		68		717		96	
\$M		\$W		\$F		\$B				\$C	
+49		+51		+86		+129				+216	

- Sleep-all-night heifer bull - extended up front with a smooth front shoulder, this bull will keep your mind at ease come calving season.



MAF Patriarch 480 - Lot 66

Lot 64 MAF Concept 4121

Birth Date: 04-02-2024

Bull 21102359

Tattoo: 4121



SIRE: *CONNEALY CONCEPT 947M AAA 20383823

ANGUSGS
Powered by NEOGEN

| WWSC Slider

DAM: ERICA 863 OF TRIPP AAA 19268439

| Erica 642 of Tripp

CALVING EASE
★★★★

CED		BW		WW		YR		RADG		SC	
+8		+5		+70		+133	25%	+29		+1.45	20%
DOC		HP		CEM		MILK				\$EN	
+30	10%	+16.7	15%	+7				+28		-28	
CW		MARB		RE		BW		Adj. WW		WW Ratio	
+45		+53		+33		80		732		103	
\$M		\$W		\$F		\$B				\$C	
+70		+66		+79		+123				+230	

- Another well-designed Concept son. Both the dam & grandam of this bull have ideal udder placement & teat size.

Lot 66 MAF Patriarch 480

Birth Date: 03-04-2024

Bull #21102351

Tattoo: 480



SIRE: *CONNEALY PATRIARCH 863J AAA 20438391



ANGUSGS
Powered by NEOGEN

| +*V A R Revelation 6299

DAM: *MOGCKS MISS SNOWFLAKE 212 AAA 20448758

| #+*Miss Snowflake 7152

CALVING EASE
★★★★

CED		BW	WW		YR		RADG		SC	
+10	25%	+8	+85	10%	+147	10%	+26	+53		
DOC		HP		CEM		MILK		\$EN		
+16		+13.8		+13		10%		+23	-41	
CW		MARB		RE		BW	Adj. WW	WW Ratio		
+62		+76		+1.12		10%		78	826	116
\$M		\$W		\$F		\$B		\$C		
+65		+75		20%		+94		+160		+273

- 1st of the Patriarchs and an excellent heifer bull prospect that has big-time performance numbers. Dam is a promising 1st calf Revelation & grandam is a Pathfinder sired by Vision Unanimous.

Lot 65 MAF Concept 440

Birth Date: 02-14-2024

Bull #21134765

Tattoo: 440



SIRE: *CONNEALY CONCEPT 947M AAA 20383823

ANGUSGS
Powered by NEOGEN

| #+*Deer Valley Growth Fund

DAM: *MISS SNOWFLAKE 151 OF TRIPP AAA 20166979

| +*MAF Miss Snowflake 561

CALVING EASE
★★★★

CED	BW	WW	YR	RADG	SC
+5	+1.7	+76 25%	+141 20%	+33 10%	+1.53 15%
DOC	HP	CEM	MILK	\$EN	
+29 10%	+7.0	+8	+18	-35	
CW	MARB	RE	BW	Adj. WW	WW Ratio
+59	+28	+26	78	677	95
\$M	\$W	\$F	\$B	\$C	
+37	+57	+105	+132	+208	

- The last of the Concept sons and one that has solid growth numbers and is backed by an outstanding cow family.

Lot 67 MAF Patriarch 495 [M1P]

Birth Date: 03-10-2024

Bull #21104756

Tattoo: 495



SIRE: *CONNEALY PATRIARCH 863J AAA 20438391



ANGUSGS
Powered by NEOGEN

| *Connealy Garrison

DAM: MEMORY 289 OF TRIPP AAA 20541481

| Memory 918 of Tripp

CALVING EASE
★★★★

CED		BW		WW		YR		RADG		SC	
+3		+2.4		+80 20%		+133 25%		+25		+1.51 15%	
DOC			HP			CEM			MILK		
+23			+12.3			+8			+29		
+16			+12			+10			+10		
CW			MARB			RE			BW		Adj. WW
+50			+97			+51			80		753
+40			+80			+40			70		106
\$M		\$W		\$F		\$B		\$C			
+78 20%		+81 10%		+84		+148		+270			

- High-performing Patriarch that has extra muscle - he gets out and moves well & his dam is a heavy milking 1st calf Garrison daughter.

Lot
68 **MAF Patriarch 479**
Birth Date: 03-03-2024 Bull *21102349

Tattoo: 479 **MAF**

SIRE: *CONNEALY PATRIARCH 863J AAA 20438391



DAM: *IMPACT GAL 226 OF TRIPP AAA 20452113
Mogcks Impact Gal 051

CED	BW	WW	YR	RADG	SC
+6	+2.0	+88 10%	+148 10%	+31 20%	+1.57 15%
DOC	HP	CEM	MILK	\$EN	
+24	+14.6	+7	+27		-44
CW	MARB	RE	BW	Adj. WW	WW Ratio
+68 20%	+82	+1.05 15%	73	728	102
\$M	\$W	\$F	\$B	\$C	
+61	+80 10%	+111 20%	+175 25%	+288	

- Another heavy, quick-growing bull from this sire group that is out of a 1st calf Growth Fund daughter.



MAF SpotLite 2439 - Lot 69

Lot
69 **MAF SpotLite 2439**
Birth Date: 02-22-2024 Bull 21113944

Tattoo: 2439 **MAF**

SIRE: MAF SPOTLITE 2053 AAA 19876461



DAM: B M MISS SNOWFLAKE 296 AAA 19579242
#B M Miss Snowflake 2061

CED	BW	WW	YR	RADG	SC
+5	+2.3	+79 20%	+133 25%	+29	+1.23
DOC	HP	CEM	MILK	\$EN	
+24	+13.9	+9	+0		-12
CW	MARB	RE	BW	Adj. WW	WW Ratio
+39	-.07	+64	80	727	100
\$M	\$W	\$F	\$B	\$C	
+50	+43	+81	+101	+181	

- We're proud to present a couple of bulls sired by a SpotLite son we sold back in our 2021 sale. This bull is soggy made, deep bodied with tremendous base width. His Aviator sired dam has a BR of 4/98 & a YR of 2/104. Grandam is a Pathfinder.

Lot
70 **MAF SpotLite 2427** [OHF]
Birth Date: 02-18-2024 Bull 21102385

Tattoo: 2427 **MAF**

SIRE: MAF SPOTLITE 2053 AAA 19876461



DAM: B M HEADLINER 2960 AAA 19579251
B M Headliner 2510

CED	BW	WW	YR	RADG	SC
+6	+1.5	+52	+97	+26	+1.26
DOC	HP	CEM	MILK	\$EN	
+18	+15.6 20%	+8	+27		-11
CW	MARB	RE	BW	Adj. WW	WW Ratio
+28	+35	+08	66	736	104
\$M	\$W	\$F	\$B	\$C	
+60	+50	+71	+102	+192	

- SpotLite son with extra muscle out of a 6-year-old Aviator daughter with a BR of 3/94.

Lot
71 **MAF Hindquarter 494**
Birth Date: 03-10-2024 Bull *21134766

Tattoo: 494 **MAF**

SIRE: LAR HINDQUARTER 049H AAA 19951844



DAM: LADY BLACKBIRD 149 OF TRIPP AAA 20166978
Lady Blackbird 759 of Tripp

CED	BW	WW	YR	RADG	SC
+14 4%	-.4 20%	+63	+109	+21	+88
DOC	HP	CEM	MILK	\$EN	
+29 10%	+13.3	+7	+38 2%		-15
CW	MARB	RE	BW	Adj. WW	WW Ratio
+45	+.51	+.63	72	732	103
\$M	\$W	\$F	\$B	\$C	
+76 25%	+76 15%	+79	+121	+233	

- Heavy-musled, moderate-framed Hindquarter son that really packs a punch. Nice heifer bull prospect.

Lot
72 **MAF Hindquarter 2465**
Birth Date: 03-11-2024 Bull *21102376

Tattoo: 2465 **MAF**

SIRE: LAR HINDQUARTER 049H AAA 19951844



DAM: B M PURPLE STAR 2921 AAA 20153876
B M Purple Star 2719

CED	BW	WW	YR	RADG	SC
+6	+2.8	+69	+120	+26	+19
DOC	HP	CEM	MILK	\$EN	
+25 25%	+14.4	+2	+31 20%		-15
CW	MARB	RE	BW	Adj. WW	WW Ratio
+32	+.59	+.15	88	721	101
\$M	\$W	\$F	\$B	\$C	
+71	+68	+64	+107	+210	

- Wide-hipped, soft-made bull out of a 6-year-old Fortress daughter that has a BR of 4/94, WR of 4/100 & a yearling ratio of 2/103.



MAF Hindquarter 2465 - Lot 72

Lot
73 **MAF Hindquarter 457**
Birth Date: 02-26-2024 Bull #21104762

Tattoo: 457 **MAF**

SIRE: LAR HINDQUARTER 049H AAA 19951844

ANGUSGS
Powered by NEOGEN

DAM: MOGCKS MEMORY 124 OF TRIPP AAA 20186990
Memory 933 of Tripp

CALVING EASE
★★★★

CED	BW	WW	YR	RADG	SC
+7	+1.4	+60	+101	+22	+1.07
DOC	HP	CEM	MILK	\$EN	
+24	+9.2	+3	+32	15%	+1
CW	MARB	RE	BW	Adj. WW	WW Ratio
+34	+50	+69	76	667	94
\$M	\$W	\$F	\$B	\$C	
+68	+70	+70	+114	+216	

- Good-topped, above average muscle in this Hindquarter son that's out of a 4-year-old Stronghold daughter.

Lot
76 **MAF Tahoe 2453**
Birth Date: 02-29-2024 Bull #21102379

Tattoo: 2453 **MAF**

SIRE: S TAHOE 1248 AAA 20133257

ANGUSGS
Powered by NEOGEN

DAM: SNOWFLAKE BURGESS 2213 AAA 20512266
Snowflake Burgess 2814

CALVING EASE
★★★★

CED	BW	WW	YR	RADG	SC
+6	+1.2	+61	+100	+21	+97
DOC	HP	CEM	MILK	\$EN	
+20	+12.3	+7	+19		-2
CW	MARB	RE	BW	Adj. WW	WW Ratio
+37	+42	+83	77	617	87
\$M	\$W	\$F	\$B	\$C	
+68	+57	+79	+126	+231	

- We think this Tahoe son will work on heifers. Dam is a 1st calf National 201 daughter.

Lot
74 **MAF Hindquarter 4112**
Birth Date: 03-18-2024 Bull #21102370

Tattoo: 4112 **MAF**

SIRE: LAR HINDQUARTER 049H AAA 19951844

ANGUSGS
Powered by NEOGEN

DAM: MOGCKS BURGESS 076 OF TRIPP AAA 19855419
Burgess 713 of Tripp

CALVING EASE
★★★★

CED		BW		WW		YR		RADG		SC	
+12	10%	-1.0	10%	+53		+91		+19		+78	
DOC			HP			CEM			MILK		
+22			+15.9			20%			+8		
									+37		
									3%		
									+7		
CW			MARB			RE			BW		Adj. WW
+21			+53			+40			73		619
											87
\$M			\$W			\$F			\$B		
									</		

- Calving-ease heifer bull out of an impressive young Rampart daughter.

Lot
77 **MAF Payraise 2467** [OHF]
Birth Date: 03-11-2024 Bull #21102389

Tattoo: 2467 **MAF**

SIRE: MAF PAYRAISE 2256 AAA 20470366

ANGUSGS
Powered by NEOGEN

DAM: #B M HEADLINER 2641 AAA 18636419
B M Headliner 2510

CALVING EASE
★★★★

CED	BW	WW	YR	RADG	SC
+5	+1.0	+71	+125	+29	+61
DOC	HP	CEM	MILK	\$EN	
+22	+14.4	+1	+33	10%	-25
CW	MARB	RE	BW	Adj. WW	WW Ratio
+49	+98	+52	84	795	112
\$M	\$W	\$F	\$B	\$C	
+62	+74	20%	+85	+157	+266

- Long-bodied, larger-outlined Payraise son that is out of a 9-year-old Sensation daughter that is a Pathfinder.

Lot
75 **MAF Tahoe 2478**
Birth Date: 04-03-2024 Bull #21102387

Tattoo: 2478 **MAF**

SIRE: S TAHOE 1248 AAA 20133257

ANGUSGS
Powered by NEOGEN

DAM: B M MISS JETSTREAM 232 AAA 17624564
#B M Miss Jetstream 2618

CALVING EASE
★★★★

CED		BW		WW		YR		RADG		SC	
+13	10%	-1.2	10%	+63		+115		+26		+1.56	15%
DOC		HP		CEM		MILK		MARB		\$EN	
+34	2%	+10.1				+12	15%	+32	15%		-18
CW		MARB		RE		BW		Adj. WW		WW Ratio	
+35		+36			-.01			76	684		96
\$M		\$W		\$F		\$B		\$C			
+67		+69		+70		+100		+197			

- Here's a Tahoe son with calving ease & yet is stout for a bull his size. His dam is a 12-year-old Right Answer daughter with a BR of 10/97.



Campbell was proud to represent Scotland School District at the Regional & State Spelling Bee competition



Campbell with her Spring Volleyball KKVC team based out of Platte – Great group of girls!

Selling 40 Purebred Yearling Angus Heifers – These heifers were home raised & will be sold as unregistered commercial heifers in groups of 5 or more. Call Mogck Angus Farms for more details at 605-940-9771 or 612-618-8577.



Jackie Lass 851 of Tripp - Dam of embryo package



Ellingson Prolific - Sire of Embryo Package

Lot 78 Prolific x 851 Legend Donor



SIRE: *ELLINGSON PROLIFIC AAA 20136857

| #+*V A R Legend 5019

DAM: +*JACKIE LASS 851 OF TRIPP AAA 19287185

| +*Jackie Lass 421 of Tripp

CED		BW		WW		YR		RADG		SC					
S +0		+4.0		+85 10%		+144 15%		+24		+55					
D +5		-3 20%		+66		+115		+24		+61					
DOC				HP		CEM				MILK		SEN			
S +14				+18.7 3%		+11 25%				+13		-9			
D +10				+14.3 25%		+12 15%				+18		-24			
CW		MARB		RE		\$M		\$W		\$F		\$B		\$C	
S +78 5%		+66		+63		+101 1%		+59		+126 10%		+179 20%		+333 5%	
D +35		+51		+52		+54		+55		+73		+118		+207	

• We're selling a package of 3 embryos from the wildly popular Prolific bull (owned by ST Genetics) and our 851 Legend donor. She's powerfully built and it's tough to find an Angus cow out there that's made like she is. Her South Point daughter sold this past fall in Justin's online sale for \$11,500 to Caffee Ranch. We're expecting calves from the 851 x Prolific mating this Spring and couldn't be more excited. Guaranteed 1 pregnancy if implanted by a certified embryologist within 1 year of the sale.



Jackie Lass 337 of Tripp - Maternal sib to embryos

Expected Progeny Difference (EPD), is the prediction of how future progeny of each animal are expected to perform relative to the progeny of other animals listed in the database. EPDs are expressed in units of measure for the trait, plus or minus. Interim EPDs may appear on young animals when their performance has yet to be incorporated into the American Angus Association National Cattle Evaluation (NCE) procedures. This EPD will be preceded by an "I", and may or may not include the animal's own performance record for a particular trait, depending on its availability, appropriate contemporary grouping, or data edits needed for NCE.

PRODUCTION EPDs

Calving Ease Direct (CED), is expressed as a difference in percentage of unassisted births, with a higher value indicating greater calving ease in first-calf heifers. It predicts the average difference in ease with which a sire's calves will be born when he is bred to first-calf heifers.

Birth Weight EPD (BW), expressed in pounds, is a predictor of a sire's ability to transmit birth weight to his progeny compared to that of other sires.

Weaning Weight EPD (WW), expressed in pounds, is a predictor of a sire's ability to transmit weaning growth to his progeny compared to that of other sires.

Yearling Weight EPD (YW), expressed in pounds, is a predictor of a sire's ability to transmit yearling growth to his progeny compared to that of other sires.

Residual Average Daily Gain (RADG), expressed in pounds per day, is a predictor of a sire's genetic ability for postweaning gain in future progeny compared to that of other sires, given a constant amount of feed consumed.

Scrotal Circumference EPD (SC), expressed in centimeters, is a predictor of the difference in transmitting ability for scrotal size compared to that of other sires.

MATERNAL EPDs

Heifer Pregnancy (HP), is a selection tool to increase the probability or chance of a sire's daughters becoming pregnant as first-calf heifers during a normal breeding season. A higher EPD is the more favorable direction and the EPD is reported in percentage units.

Calving Ease Maternal (CEM), is expressed as a difference in percentage of unassisted births with a higher value indicating greater calving ease in first-calf daughters. It predicts the average ease with which a sire's daughters will calve as first-calf heifers when compared to daughters of other sires.

Maternal Milk EPD (Milk), is a predictor of a sire's genetic merit for milk and mothering ability as expressed in his daughters compared to daughters of other sires. In other words, it is that part of a calf's weaning weight attributed to milk and mothering ability.

Cow Energy Value (\$EN), expressed in dollar savings per cow per year, assesses differences in cow energy requirements as an expected dollar savings difference in daughters of sires. A larger value is more favorable when comparing two animals (more dollars saved on feed energy expenses). Components for computing the cow \$EN savings difference include lactation energy requirements and energy costs associated with differences in mature cow size.

MANAGEMENT EPDs

Docility (Doc), is expressed as a difference in yearling cattle temperament, with a higher value indicating more favorable docility. It predicts the average difference of progeny from a sire in comparison with another sire's calves. In herds where temperament problems are not an issue, this expected difference would not be realized.

CARCASS EPDs

Carcass Weight EPD (CW), expressed in pounds is a predictor of the differences in hot carcass weight of a sire's progeny compared to progeny of other sires.

Marbling EPD (Marb), expressed as a fraction of the difference in USDA marbling score of a sire's progeny compared to progeny of other sires.

Ribeye Area EPD (RE), expressed in square inches, is a predictor of the difference in ribeye area of a sire's progeny compared to progeny of other sires.

\$VALUE INDEXES

\$Value indexes, an economic selection index allows multiple change in several different traits at once pertaining to a specific breeding objective. The \$Value is an estimate of how future progeny of each sire are expected to perform, on average, compared to progeny of other sires if the sires were randomly mated to cows and if calves were exposed to the same environment.

Maternal Weaned Calf Value (\$M), an index, expressed in dollars per head, predicts profitability differences from conception to weaning with the underlying breeding objective assuming that individuals retain their own replacement females within herd and sell the rest of the cull female and all male progeny as feeder calves. The model assumes commercial producers will replace 25% of their breeding females in the first generation and 20% of their breeding females in each subsequent generation. Traits included are as follows: calving ease direct, calving ease maternal, weaning weight, milk, heifer pregnancy, docility, mature cow weight, claw set and foot angle.

Weaned Calf Value (\$W), an index, expressed in dollars per head, to predict profitability differences in progeny due to genetics from birth to weaning. The underlying objective being producers will retain 20% of the female progeny as replacements and sell the rest of the cull females and their male counterparts as feeder calves. Traits included are as follows (in no particular order): birth weight, weaning weight, milk, and mature cow weight.

Feedlot Value (\$F), an index, expressed in dollars per head, to predict profitability differences in progeny due to genetics for postweaning feedlot merit compared to the progeny of other sires. The underlying objective assumes producers will retain ownership of cattle through the feedlot phase and sell fed cattle on a carcass weight basis, but with no consideration of premiums or discounts for quality and yield grade. Traits contributing directly to the index are as follows: yearling weight (gain), carcass weight and dry-matter intake.

Beef Value (\$B), a terminal index, expressed in dollars per carcass, to predict profitability differences in progeny due to genetics for postweaning and carcass traits. This terminal index assumes commercial producers wean all male and female progeny, retain ownership of these animals through the feedlot phase and market these animals on a carcass grid. Traits included in the index are as follows: yearling weight, dry-matter intake, marbling, carcass weight, ribeye area and fat.

Combined Value (\$C), an index, expressed in dollars per head, which includes all traits that make up both Maternal Weaned Calf Value (\$M) and Beef Value (\$B) with the objective that commercial producers will replace 20% of their breeding females per year with replacement heifers retained within their own herd. The remaining cull heifer and steer progeny are then assumed to be sent to the feedlot where the producers retain ownership of those cattle and sell them on a quality-based carcass merit grid. Expected progeny differences (EPDs) directly influencing a combined index: calving ease direct (CED) and maternal (CEM), weaning weight (WW), yearling weight (YW), maternal milk (Milk), heifer pregnancy (HP), docility (DOC), mature cow weight (MW), foot angle (Angle), claw set (Claw), dry matter intake (DMI), marbling (Marb), carcass weight (CW), ribeye area (RE) and fat thickness (Fat).

Mogck Angus Farms
mF

Mogck Angus Farms
1100 N. Main
Tripp, SD 57376

PRSR
FIRST-CLASS
U.S. POSTAGE
PAID
St. Joseph, MO
Permit #2017

Mogck Angus Farms
mF



37th Annual Production Sale — *At the Farm - Located 1/2 mile North of Tripp*
THURSDAY • MARCH 13, 2025 • 1 P.M. (CDT)